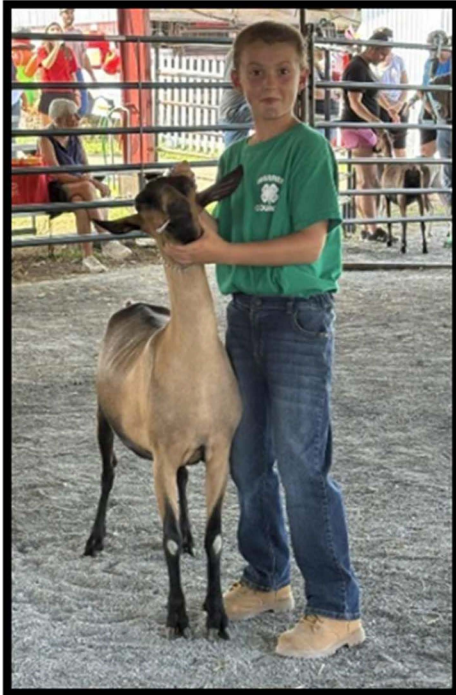




2026 4-H/FFA Exhibit Rule Book

Warren County Farmers' Fair
July 25 - August 1, 2026





May 2026

Dear 4-H and FFA Club Members:

Attached are the official rules for the 2026 4-H/FFA events at the Warren County Farmers' Fair. Please be sure to look over the General Rules as well as the Exhibitor Behavior Code of Conduct. We have also included a schedule of all the 4-H/FFA events to take place this year at the fair.

We strongly encourage 4-H members to talk with their leaders about their plans for participating in this year's fair.

All entry forms are due Wednesday, July 1. Entry forms are Google forms again this year, links can be found on each exhibit page and online <https://warren.njaes.rutgers.edu/4h/fair/>.

We look forward to seeing you at the fair! Have a great year!

Sincerely,

Alayne Torretta
County 4-H Agent

Michelle Teitsma
4-H Program Associate

Alexandra Zolla
4-H Secretary

TABLE OF CONTENTS

Animal Health Regulations	APPENDIX
Animal/Veterinary Science Exhibit.....	6
Beef Show	7-8
Club Posters	9
Conservation of Natural Resources Exhibit.....	9
Arts, Crafts & Woodworking Exhibits	10-12
Dairy Cattle Show	13-14
Entomology & Forestry Exhibits.....	15
Exhibitor Behavior Code	4
General Rules for Exhibits	5
Goat Show	16-19
Horse Exhibits, All.....	20-24
Horticulture Exhibit	25-26
Livestock Costume Contest.....	27
Photography Exhibit	28-29
Poultry & Game Bird Show	30-31
Public Presentations	32
Rabbit Show	33
Reptiles and Pocket Pets Exhibition	34
Schedule of Events	3
Sewing & Needlework.....	35
Sheep Show.....	36-37
Shooting Sports Air Rifle Match	38-39
Small Animal Show	40
Wildlife and Fisheries Exhibit	41

88th ANNUAL WARREN COUNTY FARMERS' FAIR

July 25 – August 1, 2026

SCHEDULE OF 4-H/FFA EVENTS

FRIDAY, July 24

2:00 - 7:00 pm Drop off display exhibits to 4-H Pavilion (Arts, Crafts, Needlework, Sewing, Photography, Animal Science, Conservation, Wildlife & Fisheries and Horticulture exhibits)

SATURDAY, July 25

10:30 am 4-H/FFA/Open Sheep and Market Goat Show, Red/White Livestock Show Building

12:00 pm Opening of the 88th Annual Warren County Farmers' Fair!

SUNDAY, July 26

12:00 pm ***NEW!*** 4-H/FFA Reptile & Pocket Pet Fun Show & Cage Decorating Contest

2:30 pm 4-H/FFA Small Animal Judging, Red/White Livestock Show Building

3:00 pm 4-H/FFA Rabbit Judging, Red/White Livestock Show Building

6:00 pm 4-H Livestock Costume Class

MONDAY, July 27

2:00 pm 4-H Miniature Horse Show, Horse Ring

3:00 pm 4-H/FFA/Open Goat Show (Dairy, Fiber and Companion) Red/White Livestock Show Building

6:00 pm 4-H Seeing Eye Dog Parade and Pool Party, 4-H Pavilion

TUESDAY, July 28

4:00 pm 4-H/FFA & Open Beef Show, Red/White Livestock Show Building

6:00 pm 4-H Seeing Eye Dog Parade and Pool Party, 4-H Pavilion

7:00 pm 4-H/FFA and Open Horse Costume Class, Horse Ring

WEDNESDAY, July 29

1:00 pm 4-H/FFA Games on Horseback, Horse Ring

4:30 pm 4-H Quiz Bowl, in Livestock Barn

5:00 pm 4-H/FFA Poultry and Game Bird Judging, in Livestock Barns

6:30 pm ***NEW*** 4-H Family Celebration (4-H Families ONLY)

THURSDAY, July 30

3:00 pm 4-H/FFA Horse Show, Horse Ring

FRIDAY, July 31

3:00 pm 4-H/FFA/Open Dairy Show, Red/White Livestock Show Building

6:00 pm 4-H Seeing Eye Dog Parade and Pool Party, 4-H Pavilion

SATURDAY, August 1

2:00 pm 4-H Shooting Sports Air Rifle Match, Air Rifle Tent

6:00 pm All 4-H Animals who have spent the week may leave fairgrounds

6:00 pm Pick up display exhibits from 4-H Pavilion. Premiums will be distributed upon pick up of your items.

6:00 – 8:00 pm Pick up animal premiums for those who have spent the week, 4-H Pavilion.

4-H Exhibitor Behavior Code Agreement

According to policy set forth by Rutgers Cooperative Extension and the Department of 4-H Youth Development and further endorsed by the Directors of the Warren County Farmers Fair, the following statement and 4-H Exhibitor Behavior Code shall apply to all 4-H members, their parents, legal guardians, and volunteer 4-H leaders.

The Warren County 4-H Youth Development Program will adhere to the 4-H Exhibitor Behavior Code as outlined below. **No 4-H fair project entry form will be accepted unless both the 4-H member and parent/guardian sign this agreement.**

Note: Violations of any aspect of the 4-H Code of Conduct will be immediately reported to the Warren County 4-H Staff and Warren County Farmers Fair Directors. Immediate corrective action will be taken with further disciplinary action to follow upon detailed investigation of the infraction or incident.

4-H Exhibitor Behavior Code

- The health, safety, and welfare of others must be respected at all times.
- Appropriate language and behavior are expected at all times. Profanity, foul or abusive language, inflammatory statements, derogatory comments or physical altercations toward any group or individual are not permitted.
- 4-H members are required to wear exhibitor wrist bands for proper identification while on the grounds or participating in a 4-H event.
- Participants are responsible for following the instructions of all 4-H staff and event 4-H volunteer leaders.
- All behavior or language of a sexual nature at 4-H events is inappropriate and unacceptable. Dignified and respectable behavior is expected at all times from youth and adults.
- Curfew hours must be strictly followed.
- Behavior during free time is subject to the supervision of 4-H staff and 4-H leaders.
- Previously set Dress Code standards for the event must be met by all participants (i.e., no sexually suggestive, culturally insensitive, tobacco or alcohol industry sponsored shirts, inappropriately cut shirts, shorts, pants or skirts, etc.)
- Possession, distribution or use of alcoholic beverages or illegal drugs is prohibited. Prescription drugs and over-the-counter medications may be dispensed by adult chaperones only with written authorization provided by the parent/guardian on the 4-H Event Permission Form filed for the event.
- For the well-being of self and others, smoking and the use of other tobacco products is prohibited in all animal barns as well as covered buildings.
- Care and respect for property, personal and institutional, is expected at all times. Theft or possession of missing property is prohibited and will be handled to the fullest extent of the law as well as forfeiting of premiums and dismissal from the fairgrounds.
- Unauthorized possession, distribution or use of weapons, ammunition or fireworks is prohibited.
- Honesty is expected at all times from 4-H members. Dishonesty, cheating, plagiarism and forgery are inappropriate actions and are grounds for forfeiting premiums and dismissal from the fairgrounds.

You will be required to sign 4-H entry forms for Warren County indicating that you have read the 4-H Exhibitor Behavior Code outlined above and agree to the conditions set forth.

GENERAL RULES FOR ALL EXHIBITS

1. Animals are not required to spend the week at Fair. Animals will be allowed to truck in day of show for all shows. For safety reasons, trucked-in animals must stay until 9 pm day of show or risk showing at the fair in the future. Any limitations will be based on barn space for animals staying overnight. Please contact 4-H staff should you need to discuss barn space.
2. For exhibitors who need to spend the night, the proper paperwork must be on file with and approved by the 4-H office before the start of Fair. Exhibitors spending the night at Fair are governed by the Guidelines issued by Rutgers Cooperative Extension. Forms may be found at <https://warren.njaes.rutgers.edu/4h/fair/>.
3. Animals trucked in day of show will be awarded premiums. 4-H Staff will announce at the conclusion of each show how and when to pick up premiums.
4. It is required that exhibitors strip and clean stalls before trucking out. Stalls not stripped may risk showing at the fair in the future.
5. For FFA exhibitors who are not affiliated with a 4-H club and will be trucking in for a show, the 4-H staff will be assigning stalls. Stall assignments will be issued via email before the start of Fair.
8. All 4-H exhibits and shows are open to officially enrolled and active Warren County 4-H club members grades 4-13. 4-H Cloverbud club members (grades K-3) may enter only non-competitive Cloverbud classes and events. Warren County FFA members are encouraged to participate in all agricultural shows and exhibits.
9. Cloverbud exhibits are for 4-H members in grades K-3. These exhibits will not be judged but will be placed on display only.
10. **All exhibits and animals must be pre-registered in the 4-H office on or before July 1.** Registration forms are Google forms. Links for each form are listed on each exhibit page or click here: <https://warren.njaes.rutgers.edu/4h/fair/>. Contact the 4-H Office should you have issues accessing the Google forms.
11. All articles must be made by the exhibitor during the 2025-26 year which runs September to August.
12. When determining grade level for fair events, use grade from school year just completed (NOT THE GRADE YOU WILL BE ENTERING IN SEPTEMBER).
13. Arts & Crafts, Fine Arts, Woodworking, Photography, and Sewing/Needlework should be brought to the 4-H Pavilion (next to the red and white Livestock Show Barn) on the fairgrounds **on Friday, July 24 between the hours of 2pm-7pm**. Items must remain on display until Saturday, August 1 at 6pm. Check specific rules and the day of the show for any exhibit that you wish to enter. **ALL ITEMS exhibited in the 4-H Pavilion MUST BE picked up by 6pm Saturday, August 1. Any items not picked up will be disposed of if not claimed, unless other arrangements have been made with the 4-H office staff.**
14. Rutgers Cooperative Extension of Warren County and Warren County Farmers' Fair Association will not be responsible for any items exhibited. The exhibitors shall hold the Warren County Farmers' Fair Association blameless for any loss and upon this condition only are the entries accepted. However, every precaution will be taken to protect the exhibits.
15. Only the 4-H member or parent is authorized to pick up their premiums. Written permission must be obtained to allow anyone else including club leaders to pick up a members' premium envelope.
16. **ANIMAL HEALTH:** All animals brought to the fair are subject to a veterinary inspection by a vet selected by the Warren County Farmers' Fair daily. Time and dates of inspections are TBA. Any animals deemed unhealthy to be shown are to be removed from the fairgrounds IMMEDIATELY. The decision of this vet is final.

4-H ANIMAL/VETERINARY SCIENCE EXHIBIT

1. General Rules for all members apply (page 5).
2. Items/Displays must be registered by July 1 and brought to the 4-H Pavilion across from the Livestock Show Barn on the Fairgrounds on Friday, July 24 between 2 - 7pm.
3. All articles must be left on display until **6 pm on Saturday, August 1** in order to receive premiums and awards. When picking up your items, you may pick up your premium. Any items not picked up will be disposed of if not claimed, unless other arrangements have been made with the 4-H office staff.
4. Entries may be submitted in, but are not limited to, the following areas:
 - Parts of animals: the circulatory, respiratory, digestive or reproduction systems.
 - Animal health: including disease characteristics and identification of diseases, animal nutrition or animal husbandry practices.
 - Posters, charts and table displays will be accepted.

If real specimens are used, they must be preserved and presented in an appropriate manner. It is not necessary that the member draw animals or parts. Pictures, models, magazine cutouts, and other facsimiles can be used.

Entries will be judged on the following criteria:

- Accuracy of information presented - 30 points
- Includes common and scientific names - 20 points
- Eye appeal of entry - 15 points
- Presentation - 15 points
- Neatly labeled - 10 points
- Mounting and arrangement - 10 points

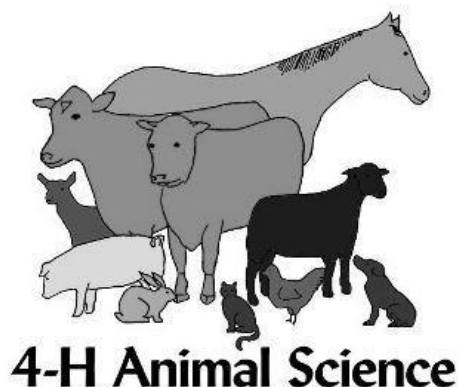
Animal Science Exhibit Entry Form: <https://forms.gle/G7rEbPmoUoaZHmDaA>

AWARDS FOR ANIMAL/VETERINARY SCIENCE

Excellent \$5.00 Very Good \$3.00 Good \$1.00

Best of Show and Honorable Mention - Rosette

Cloverbuds will receive a participation ribbon



4-H Animal Science

4-H/FFA BEEF SHOW

Tuesday, July 28 at 4:00pm

*Show is combined with WCFF Open Show

Rules

1. General Rules for all members apply (page 5).
2. For the safety of the animals and general public, all animals must be on exhibit in the barn by 11 am on the day of show and remain on the fairgrounds until 9pm day of show or risk showing at the fair in the future.
3. Only designated herdsmen and adults, authorized by the Warren County Farmers' Fair Association, FFA Advisor, and County 4-H Agent, will be allowed to remain on the fairgrounds overnight with proper permission forms on file with the 4-H office. Herdsmen are responsible for following the RCE guidelines for overnight events. It is the responsibility of 4-H leaders and advisors to find responsible herdsmen.
4. All entries must be owned by the exhibitor, a Warren County 4-H Club or FFA Chapter or leased. Calves born in May can be shown only by the member who owns the dam before the time of breeding. Lease forms must be on file with the 4-H office by **May 1** of current project year.
5. Dress for the show will be plain, clean, collared shirt tucked into clean, neat blue jeans. Attire should not denote a herd, farm, 4-H Club or FFA Chapter.
6. The exhibitor must provide his own hay and feed.
7. The superintendent shall consult with the attending veterinarian regarding removal of any unhealthy animal. 4-H Staff must be notified of unhealthy animals leaving the fairgrounds within 24 hours. See health regulations in front of book. Animals must be free of external parasites, ringworm, pinkeye and contagious or infectious diseases.
8. All state health requirements for shows and fairs will be in effect. All animals including steer must have identification (including tag or tattoo).
9. **Animals may be shown in ONLY ONE DIVISION: Breeding or Market/Steer.**
10. Market Show:

There will be four weight classes in each division: lightweight, middleweight, intermediate weight and heavy weight. The weights of these divisions will be determined after the weigh-in so as to equally distribute the steers in the show. Unruly animals can be removed from the ring at the judge's discretion.

Market animals must be either a fully castrated male (steer) or a heifer that is only entered in the steer/market animal show.
11. The 4-H Beef show is being run in conjunction with the Open Beef Show beginning at 4pm. 4-H Classes will be mixed in with Open classes.

Beef Show Entry Form: <https://forms.gle/ouFYDcmVkUJP2MaE9>

Awards

Excellent - \$15.00 Very Good - \$10.00 Good - \$6.00

– SHOWMANSHIP –

Animals shown in classes S1-S5 must be owned or leased by exhibitor

- S1. NOVICE - First year showing if in 4th - 7th grades
- S2. BEGINNER - Second and third year showing, or first year showing if 8th - 13th grade
- S3. INTERMEDIATE - Fourth and fifth year showing
- S4. EXPERIENCED - Six or more years of showing
CHAMPION SHOWMAN – first place of classes 1, 2, 3, and 4
- S5. Cloverbud Showmanship – 4-H Cloverbud members, grades K-3. Participation ribbons will be given.
- S6. BEST FITTED CLASS – Any animal fit by the exhibitor may be brought into the ring for this class.

BREEDING SHOW

Show order will be Angus, Hereford, Other Registered Breeds, Unregistered, Showmanship, Market/Steer

- FEMALES -

1. JUNIOR HEIFER CALVES - Calved Jan. 1, 2026- May 31, 2026
2. WINTER HEIFER CALVES - Calved Nov. 1 - Dec. 31, 2025
Selection of Junior Heifer Calf Champion and Reserve Junior Heifer Calf Champion
3. SENIOR HEIFER CALVES - Calved Sept. 1 through Oct. 31, 2025
4. LATE SUMMER YEARLING HEIFERS - Born July 1 through August 31, 2025
Selection of Senior Heifer Calf Champion and Reserve Senior Heifer Calf Champion
5. EARLY SUMMER YEARLING HEIFER - Calved May 1 through June 30, 2025
6. LATE JUNIOR YEARLING HEIFERS - Calved March 1 through April 30, 2025
Selection of Intermediate Heifer Champion and Reserve Intermediate Heifer Champion
7. EARLY JUNIOR YEARLING HEIFERS - Calved Jan. 1 through Feb. 28, 2025
8. SENIOR YEARLING HEIFERS - Born September 1 through December 31, 2024
Selection of Senior Heifer Champion and Reserve Senior Heifer Champion
Selection of Grand Champion Heifer (all heifer champions) and Reserve Grand Champion Heifer (remaining champions and reserve champions competing)
9. COW AND HER CALF - 2 animals, a cow and her offspring, calf must be born after Jan. 1 of current year

- MALES -

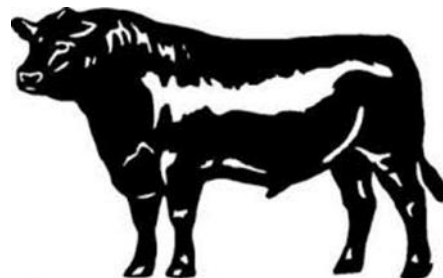
10. JUNIOR BULL CALVES - Calved Jan. 1, 2026 through May 31, 2026
11. LATE SENIOR BULL CALVES - Calved Nov. 1 through Dec. 31, 2025
Selection of Junior Bull Calf Champion and Reserve Junior Bull Calf Champion
12. EARLY SENIOR BULL CALVES - Calved Sept. 1 through Oct. 31, 2025
13. LATE SUMMER YEARLING BULLS - Born July 1 through August 31, 2025
Selection of Senior Bull Calf Champion and Reserve Senior Bull Calf Champion
14. EARLY SUMMER YEARLING BULLS - Born May 1 through June 30, 2025
15. APRIL JUNIOR YEARLING BULLS - Born April 2025
16. MARCH JUNIOR YEARLING BULLS - Born March 2025
Selection of Intermediate Champion Bull and Reserve Intermediate Champion Bull
17. EARLY JUNIOR YEARLING BULLS - Born January 1 through February 28, 2025
18. SENIOR YEARLING BULLS - Born September 1 through December 31, 2024
Selection of Junior Bull Champion and Reserve Bull Champion
19. SUMMER SENIOR YEARLING BULLS - Born May 1 through August 31, 2024
20. TWO-YEAR-OLD BULLS - Born January 1 through April 30, 2024
Selection of Senior Champion Bull and Reserve Senior Bull Champion
Selection of Grand Bull Champion (all bull champions) and Reserve Grand Bull Champion (remaining champions and reserve champions competing)

- MARKET ANIMAL SHOW -

Animals entered in this division will be weighed and divided into classes after weigh-in.

- MARKET ANIMAL LIGHTWEIGHT
- MARKET ANIMAL MIDDLEWEIGHT
- MARKET ANIMAL INTERMEDIATE WEIGHT
- MARKET ANIMAL HEAVYWEIGHT

Selection of Grand Market Champion and Reserve Grand Market Champion



4-H CONSERVATION OF NATURAL RESOURCES EXHIBIT

1. All General Entry Rules must be followed.
2. All members must submit an entry from specifying each item by July 1st.
3. Items/Displays must be brought to the 4-H Pavilion across from the Livestock Show Barn on the Fairgrounds on Friday, July 24 between 2 - 7pm.
4. All articles must be left on display until **6pm on Saturday, August 1** in order to receive premiums and awards. When picking up your items, you may pick up your premium. Any items not picked up will be disposed of if not claimed, unless other arrangements have been made with the 4-H office staff.
5. All exhibits must have common and scientific names listed.
6. Items related to conservation of natural resources including conserving land, clean air, clean water, natural habitats, etc.

Exhibits can include sketches, photo stories or displays relating to recycling, land use, air pollution, animal extinction, etc. The story should identify the concern and present a possible solution to the problem or educate the public about a conservation problem.

Conservation Exhibit Entry Form: <https://forms.gle/K6VSuYwvhBUupiSq9>

AWARDS FOR CONSERVATION OF NATURAL RESOURCES

Excellent \$5.00 Very Good \$3.00 Good \$1.00

Best of Show and Honorable Mention - rosette

Cloverbuds will receive a participation ribbon



4-H CLUB POSTERS

Posters are a great way to promote a 4-H club, recruit new members, and inform the public of all the club's activities. It's recommended that the posters include:

- a. name of club and focus area of the club
 - b. the 4-H emblem
 - c. contact information for people to join if the club is open to new members (QR codes are a great way to accomplish this!)
 - d. photos of club members participating in activities (photo releases must be on file with the 4-H office)
 - e. an educational component to teach viewers something new
 - f. Age range of members
1. Minimum poster size is 22"x28", maximum poster size is a three panel tri-fold 36"x48" (3ft x 4ft.)
 2. Posters may be set up on Friday, July 24th from 2 PM to 7 PM in the 4-H Pavilion.
 3. Clubs that submit a poster for exhibit will receive a \$10 premium if left on display until 6:00 pm on Saturday, August 1.

Club Poster Entry Form: <https://forms.gle/3Wm2de4GTtqpeB3t6>

4-H CRAFTS, FINE ARTS & WOODWORKING EXHIBITS

1. General Rules for all members apply (page 5).
2. All members must submit an entry form specifying each item by July 1st. **Goal sheets are now part of the entry forms and MUST be completed upon registration.**
3. A club member may only enter one item per class with no duplicate items in a class, for a total of ten (10) items for this department; no exceptions for members in more than one club.
4. Arts & Crafts items entered in this department must have been made by a 4-H member during the current project year.
5. Items/Displays must be brought to the 4-H Pavilion across from the Livestock Show Barn on the Fairgrounds on Friday, July 24 between 2 - 7pm.
6. All articles must be left on display until **6pm on Saturday, August 1** in order to receive premiums and awards. When picking up your items, you may pick up your premium. Any items not picked up will be disposed of if not claimed, unless other arrangements have been made with the 4-H office staff.
7. Kits are not allowed, except when basic items are needed to begin a project. However, the finished project should show a member's originality and creativity.
8. A wire hanger must accompany each t-shirt and/or sweatshirt entry.
9. Entry tags will be ready for you to attach to each entered item when you drop off on Friday, July 24.

Craft Classes:

1. Creative writing (short story, poetry, etc.)	2. Stenciling-on anything; except wood
3. Holiday crafts	4. Basketry-woven, decorated, etc.
5. Paper crafts	6. Folk painting
7. Fabric crafts (Dolls, Animals, Trees)	8. Party favors-napkin favors, hat and centerpiece
9. Wood craft	10. Candles-poured, dipped, carved, decorated, etc.
11. Yarn craft	12. Paper mache-animals, piñata, etc.
13. Macramé	14. Shrink art
15. Stone & shell crafts	16. Wreaths
17. Leather craft	18. Floral centerpieces-using artificial/dried flowers
19. Metal craft	20. Decoupage-eggs, wood, metal, etc.
21. Bead craft	22. T-shirt art (except appliques)
23. Bottle craft	24. Appliqué art (including sweatshirts)
25. Fabric painting	26. Embellished shoes
27. Styrofoam craft	28. Puppets
29. Pompom crafts	30. Bread dough crafts
31. Soap crafts-Soap carving, decorated soap, etc.	32. Broom crafts
33. Shadow box /diorama	34. Stamp craft
35. Duct tape crafts	36. Decorated flower pots (NO LIVE PLANTS)
37. Tile crafts- tile magnets, earrings, etc	38. Miscellaneous

Craft Exhibit Entry Form: <https://forms.gle/58e4TMndCM55E4dE9>

Art Classes by category:

Drawing			
1. Black lead pencil	2. Colored pencils	3. Charcoals	4. Pastels
5. Magic Markers	6. Mixed media	7. Conte	8. Crayon
9. Sand art drawing	10. Drawing done on computer (ex. Drawings done with a graphics pad and/or using computer assisted drawing)		11. Miscellaneous

Painting			
12. Water colors	13. Acrylics	14. Tinsel painting	15. Oils
16. Mixed media	17. Watercolor pencil	18. Miscellaneous painting	

Sculpture			
19. Metal	20. Wood	21. Clay Piece	22. Cast
23. Mixed media	24. Sculpty (also includes jewelry)	25. 3-D Printed – original design	26. 3-D Sculpture assembled from print, computer images, etc.

Ceramics			
27. Stained item	28. Plain glazed item	29. Combination glazed object	30. Plain underglaze object
31. Detailed underglaze object	32. Hand molded	33. Decals	34. Fired gold decoration
35. Matte glaze	36. Other types		

Other Art			
37. Collages	38. Mixed media	39. Poster art	40. Plaster of Paris
41. Vegetable/fruit printing	42. Scratch art	43. Origami	44. Miscellaneous

Art Exhibit Entry Form:

<https://forms.gle/mPyMvEnfk9FHfrhB6>



Woodworking Classes:

1. Toy, puzzle, marionette	2. Birdhouse	3. Furniture with legs
4. Furniture without legs	5. Lamp	6. Frame (picture or mirror, etc.)
7. Box (toy, jewelry, etc.)	8. Lathe work (bowls, etc.)	9. Musical instrument
10. Recreational equipment	11. Refinishing project	12. Rack or shelf
13. Other		

Woodworking Exhibit Entry Form: <https://forms.gle/s3Yn7sRiMWzLtao37>

* Wood projects will be judged on the following criteria: overall aesthetic presentation, consistence of workmanship, suitability of materials used, creativity/originality or pattern/kit fulfillment, structural proportions, appropriateness for age/skill level, application of techniques (measuring, joining, turning, construction, etc.) and finishing (sanding, painting, staining, etc.).

Awards & Ribbons for Crafts, Fine Art & Woodworking

Excellent \$3.00 Very Good \$2.00 Good \$1.00

Best of Show and Honorable Mention - rosette



4-H/FFA DAIRY CATTLE SHOW*

Friday, July 31 - 3:00 PM

*Show is combined with WCFF Open Show

Rules

1. General Rules for all members apply (page 5).
2. Only designated herdsman and adults, authorized by the Warren County Farmers' Fair Association, FFA Advisor, and County 4-H Agent, will be allowed to remain on the fairgrounds overnight with proper permission forms on file with the 4-H office. Herdsmen are responsible for following the RCE guidelines for overnight events. It is the responsibility of 4-H leaders and advisors to find responsible herdsman.
3. All entries must be owned (and transferred) or leased to the exhibitor by May 1 of the current year. Only exception will be Junior calves born in May to dams registered to the member before the time of breeding.
NOTE: Leases must conform to rules stated on the Warren County 4-H/FFA Dairy Lease. A copy of the lease and photocopy (front and back) of the registration must be on file in the 4-H office by May 1 of the current year. A copy must also be available for the superintendent to see at check-in.
4. Exhibitors must wear a clean white short sleeved shirt tucked into long white pants. Attire should not denote a herd, farm, 4-H Club or FFA Chapter.
5. All animals must be on exhibit in the barn by 12 Noon on the day of show. Milking animals may return home immediately after the show. Non-milking animals must remain on the grounds until 9pm, or may stay overnight.
6. The exhibitor must provide his own hay and feed.
7. The superintendent will check registration and health papers for all animals when they arrive day of show. **The registration and transfer date on registration papers must be by May 31.**
8. The superintendent shall consult with the attending veterinarian regarding removal of any unhealthy animal. 4-H Staff must be notified of unhealthy animals leaving the fairgrounds within 24 hours. See health regulations in front of book.
9. HEALTH RECOMMENDATIONS: Check State Health Requirements in front of book.
 - a. All animals must be free of ringworm and pinkeye. Animals can be vaccinated for pinkeye.
 - b. It is recommended that all females be immunized at least two weeks before the first local show or within six months of that show for IBR-PI3. Consult your veterinarian for BVD.
 - c. In the event an animal is sick and the owner cannot be located, the Show Superintendent is authorized to call the veterinarian to attend this animal at cost of the owner.
 - d. Other health recommendations shall be those designated by the State Department of Agriculture.
10. Both full registered and papered grade animals identified by National Association may show; papers are required.
11. Championship ribbons will be awarded only to animals that hold a blue ribbon for their class.
12. No horned cattle will be shown.
13. All animals must have been entered in their county 4-H show to exhibit at the State 4-H Show.
14. The 4-H/FFA Dairy show is being run in conjunction with the Open Dairy Show. 4-H Classes will be mixed in with Open classes.

Dairy Show Entry Form: <https://forms.gle/Wf58VyjdTYdntj6E8>

AWARDS

Excellent - \$15.00 Very Good - \$10.00 Good - \$6.00
Cloverbuds will receive a participation ribbon



1. SHOWMANSHIP CLASSES Animals shown by 4-H members (grades 4-13) in showmanship must be owned or leased by exhibitor.

- a. CLOVERBUD – grades K-3 – comments only, 4-H Cloverbud Member does not have to own the animal. Animal shown by a Cloverbud Member must be calf or younger.
 - b. NOVICE - First year showing if in 4th - 7th grade
 - c. BEGINNER - Second and third year showing or first year showing if in 8th - 13th grade
 - d. INTERMEDIATE - Fourth and fifth year showing
 - e. EXPERIENCED - Six or more years of showing
- CHAMPION SHOWMAN - 1st place of b, c, d, and e.

TYPE CLASSES

1. Junior Heifer Calf – born between March 1, 2026 and May 31, 2026
2. Intermediate Heifer Calf – born between December 1, 2025 and February 28, 2026
3. Senior Heifer Calf – born between September 1, 2025 and November 30, 2025
4. Summer Junior Yearling – born between June 1, 2025 and August 31, 2025
5. Junior Yearling – born between March 1, 2025 and May 31, 2025
6. Intermediate Senior Yearling – born between December 1, 2024 and February 28, 2025
7. Senior Yearling – born between September 1, 2024 and November 30, 2024

Selection of Junior Champion Female and Reserve Junior Champion Female

8. Two-Year-Old Not Yet Freshened – born between September 1, 2023 and August 31, 2024
9. Junior Two-Year-Old in Milk – born between March 1, 2024 and August 31, 2024
10. Senior Two-Year-Old in Milk - born between September 1, 2023 and February 29, 2024
11. Junior Three-Year-Old - born between March 1, 2023 and August 31, 2023
12. Senior Three-Year-Old – born between September 1, 2022 and February 28, 2023
13. Four-Year-Old – born between September 1, 2021 and August 31, 2022
14. Five-Year-Old – born between September 1, 2020 and August 31, 2021
15. Mature Cow, six years and over – born before September 1, 2020
16. 125,000 Lb. Class – Produced 125,000 lbs. milk or over by July 31, 2025. DHIA Supervisor or County Agricultural Agent must certify proof of production. Cannot compete in Classes 16, 17, and 20.
17. Three and Four-Year-Old, Dry – any animal born between September 1, 2021 and August 31, 2023 that has freshened and is now dry.
18. Five Years and Older, Dry – any animal born before August 31, 2020 that has freshened and is now dry

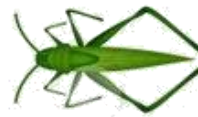
Selection of Senior Champion Female and Reserve Senior Champion Female

Selection of Grand Champion Female and Reserve Grand Champion Female

19. Dam-Daughter – two animals, a cow and her female offspring
20. Produce of Dam – two female animals, any age, from the same dam
21. Best Animal Bred, Owned, and Shown
22. Club Herd - 3 animals from a club or chapter, one born after September 1, 2025: one born between September 1, 2024 and August 31, 2025; one born before September 1, 2024. This class to be judged on the basis of type. Animals entered as 4-H animals can only be shown in a 4-H herd. Animals entered as FFA animals can only be shown in a FFA herd.

All breed classes, which are split, will be combined if an inadequate number of entries come in.

4-H ENTOMOLOGY EXHIBIT



1. General Rules for all members apply (page 5).
2. Items/Displays must be brought to the 4-H Pavilion across from the Livestock Show Barn on the Fairgrounds on Friday, July 24 between 2 - 7pm.
3. All articles must be left on display until **6 pm on Saturday, August 1** in order to receive premiums and awards. When picking up your items, you may pick up your premium. Any items not picked up will be disposed of if not claimed, unless other arrangements have been made with the 4-H office staff.
4. All exhibits must have common and scientific names listed.
5. Exhibits relate to the study of insects. Items: collecting nets made by the exhibitor, posters of the life cycle of an insect, photo story or picture board, collections, etc. All insects should be identified by their common and species name.

Entomology Exhibit Entry Form: <https://forms.gle/Q1VgCQ5LxzMgdvDg6>



4-H FORESTRY EXHIBIT

1. General Rules for all members apply (page 5).
2. Items/Displays must be brought to the 4-H Pavilion across from the Livestock Show Barn on the Fairgrounds on Friday, July 24 between 2 - 7pm.
3. All articles must be left on display until **6 pm on Saturday, August 1** in order to receive premiums and awards. When picking up your items, you may pick up your premium. Any items not picked up will be disposed of if not claimed, unless other arrangements have been made with the 4-H office staff.
4. All exhibits must have common and scientific names listed.

Forestry Exhibit Entry Form: <https://forms.gle/2nw8FeodCw8pgft66>

CLASSES

1. Twig collection - at least 10 different native species, mounted and labeled with common and scientific name
2. Leaf collection - same as above
3. Fruit collection - (cones, nuts, etc.) same as above
4. Bark collection - at least 5 different native species, mounted and labeled with common and scientific name
5. Woodblock collection - same as bark
6. Forest tree/wildlife shrub seedling - enter one of these and indicate age; include variety name
7. 4-H seedlings - 2 average seedlings in appropriate containers raised from seed by member, include variety name
8. Balled and burlapped tree - started from seed, 3 or more years old, indicate age; include variety name
9. Miscellaneous - any display relating to the forestry project



Awards & Ribbons for Entomology & Forestry

Excellent \$5.00 Very Good \$3.00 Good \$1.00

Best of Show and Honorable Mention - rosette

Cloverbuds will receive a participation ribbon

4-H/FFA GOAT SHOW

Market goats: Saturday, July 25 - 10:30am, combined with Open Sheep/Market Goat Show
Dairy/Fiber/Companion classes: Monday, July 27 - 3 PM, combined with WCFF Open Show

Rules

1. General Rules for all members apply (page 5).
2. Only designated herdsmen and adults, authorized by the Warren County Farmers' Fair Association, FFA Advisor, and County 4-H Agent, will be allowed to remain on the fairgrounds overnight with proper permission forms on file with the 4-H office. Herdsmen are responsible for following the RCE guidelines for overnight events. It is the responsibility of 4-H leaders and advisors to find responsible herdsmen.
3. State Health Recommendations will be followed (see front of book).
4. For the safety of the animals and general public, all animals must be on exhibit in the barn by 11 am on the day of show and remain on the fairgrounds until 9pm day of show or risk showing at the fair in the future.
5. The superintendent shall consult with the attending veterinarian regarding removal of any unhealthy animal. 4-H Staff must be notified of unhealthy animals leaving the fairgrounds within 24 hours. See health regulations in front of book.
6. Bedding will be supplied. 4-H'ers supply feed, buckets, and are responsible for feeding their own animal or making arrangements for them to be fed.
7. Animals or the dam must be owned or leased by 4-H/FFA members by **MAY 1** of the current year. **Lease forms must be on file with the 4-H office by May 1 of the current year.**
8. Exhibitors must wear white short sleeved shirt tucked into long white pants or blue jeans. No shirts with herd name logos will be permitted.
9. Goats must have USDA approved official identification (ear tag and/or approved registry tattoo).
10. Exhibitors will be required to strip their pens before leaving fairgrounds. ALL members are responsible to help put up and take down pens prior to and after their show. Pens will be erected and taken down at times to be announced by the superintendent.
11. Classes will be judged by individual breeds. Breed classes are for registered purebred goats. All non-purebred animals must be shown in the Grade/Recorded Grade classes. A grade is a goat that is not purebred or could be purebred without registration paperwork. Recorded Grade goats are defined by the International Dairy Goat Registry as: "Those goats having little or no information available on their ancestry or of their ancestry were not registered, then the goat can be recorded as Grade. The application process to register a grade animal requires identification of the breed the animal most represents, a photo and available background information on the animal. If the animal is found to conform to the breed standards for its age and gender but has no registered ancestors, it will be entered in the Grade herdbook as Recorded by Appearance."
12. In order to show, an exhibitor must participate in a showmanship class. Exceptions to this requirement may occur if the exhibitor is at college, has a mandatory school or job function or has a previously scheduled commitment. All exceptions must be approved by the county 4-H Agent/4-H Program Assistant prior to the start of the fair. If an exception occurs, all project animals owned by the exhibitor may be shown by an eligible 4-H member.
13. At check in have all registration papers, copies of lease forms and original health papers available.
14. Horned animals are only permitted in the Market, Fiber and Companion classes.
15. Classes with less than 5 animals may be combined at the show at the judge's discretion.
16. Members must be enrolled with a "Goat" project in some way (e.g. working with a project animal, lease/loaner project, etc.)
17. Dam and daughter do not have to be owned by one person. They must be entered separately and ownership indicated.
18. If an exhibitor has more than one animal in the same class, then another 4-H member(s) must show the other animal (s). (Exceptions are those in college or having jobs that prohibit them from attending the show. One animal permitted per absentee exhibitor.)
19. **Animals may be shown in ONLY ONE DIVISION: Dairy, Fiber, Market or Companion.**
20. Dry Doe = not in milk; In Milk = a milking doe; Doe that has Never Freshened = never given birth

Goat Show Entry Form: <https://forms.gle/JFQsUC7Uk1iz36w48>

Awards: Excellent \$8.00 Very Good \$5.00 Good \$2.00

Cloverbuds will receive a participation ribbon

SHOWMANSHIP CLASSES

Animals shown in showmanship must be owned or leased by exhibitor.

1. Senior Showmanship – Exhibitors in grades 9-13 as of September 1 of current project year
2. Junior Showmanship – Exhibitors in grade 6-8 as of September 1 of current project year
3. Novice Showmanship – Exhibitors in grades 4-5 and anyone in their first year of showing

Champion & Reserve Champion Showman (best of 1, 2, and 3)

4. Cloverbud Showmanship – K – 3rd grade (will receive a participation ribbon)

Dairy Breed Type Classes

Dairy Breeds: Alpine, LaMancha, Nigerian Dwarf, Nubian, Oberhasli, Toggenburg, Saanen, All Other Purebreds, Grades (Recorded & Unrecorded). Does and Bucks.

Junior Classes (Bucks less than 12 months & Does less than 24 months that have never freshened)

5. 0-4 months Doe - born between April 1, 2026 and July 1, 2026
6. 4-8 months Doe - born between December 1, 2025 to March 31, 2026
7. 8 - 12 months Doe - born between August 1, 2025 to November 30, 2025
8. 12 - 24 months- Doelings that have never freshened- born between August 1, 2024- July 31, 2025
9. 2-4 months Buck – born April 1, 2026 to May 30, 2026
10. 4-8 months Buck – born December 1, 2025 to March 31, 2026
11. 8-12 months Buck – born August 1, 2025 to November 30, 2025

Jr. Champion & Reserve Champion (winners classes 5-11)

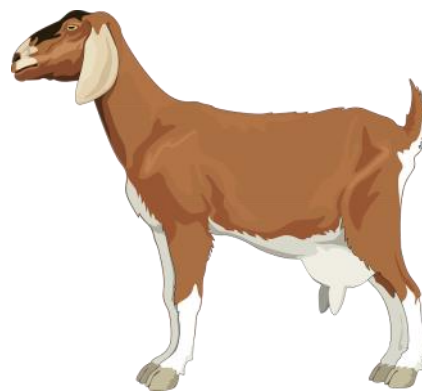
Senior Classes (Does that have freshened at least once)

12. Under 2 years in milk
13. 2 years and under 3 years in milk
14. 3 years and under 5 years in milk
15. 5 years and over in milk
16. Dry Doe 2-4 years
17. Dry Doe 5 years and over

Sr. & Reserve Champion (winners classes 12-17)

Grand & Reserve Dairy Goat Champion (Jr & Sr Champions, Jr & Sr Reserve Champions)

18. Dam and Daughter (not necessarily owned by one person). If owned by different people, please note and state who owns the other doe. Dam and daughter must be shown in their individual classes.
19. Best Fitted



Fiber Breed Classes

Fiber Breeds include Angora, Cashmere and Pygora – Does and Wethers

Junior Classes

20. 0-4 months – born between April 1, 2026 and July 1, 2026
21. 4-8 months – born between December 1, 2025 and March 31, 2026
22. 8-12 months – born between August 1, 2025 and November 30, 2025
23. 2-6 months Buck – born February 1, 2026 – May 30, 2026
24. 6-12 months Buck – born August 1, 2025 – January 31, 2026
25. 12-14 months Buck – born February 1, 2025 – July 30, 2025

Jr. Champion & Reserve Champion (winners classes 20-25)

Senior Classes

26. 12-24 months born between July 1, 2024 and July 1, 2025
27. 2 years and under 3 years
28. 3 years and under 5 years
29. 5 years and over

Sr. & Reserve Champion (winners classes 26-29)

Grand & Reserve Fiber Goat Champion (Jr & Sr Champions, Jr & Sr Reserve Champions)

30. Dam and Daughter (not necessarily owned by one person). If owned by different people, please note and state who owns the other doe. Dam and daughter must be shown in their individual classes.
31. Best Fitted

Companion Classes

Judged more on the relationship between handler and animal than animal confirmation, exhibitors will also be tested on their knowledge of goats.

Miniature Silky Fainting Goats, Pygmy, Dairy Wethers, Dairy Does over 24 months Never Freshened, Meat Goat Does and Wethers over 24 months

Pygmy and Miniature Silky Fainting Goats

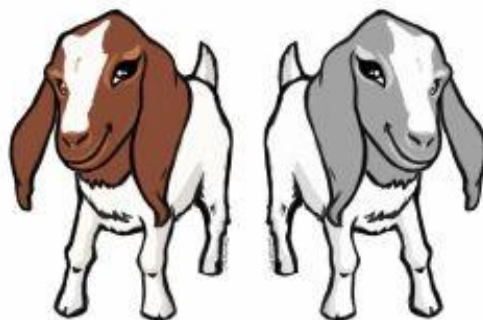
32. Less than 12 months - born after August 1, 2025
33. Over 12 months - born before August 1, 2025

Dairy & Market Wethers

34. Less than 12 months - born after August 1, 2025
35. Over 12 months - born before August 1, 2025

Dairy & Market Does (that have never freshened)

36. Over 24 months - born before August 1, 2024
37. Best of Two Head - Any two animals exhibited in classes 32-36. To be judged on quality and similarity. May be owned separately.



Market Classes -

combined with the WCFF Open Sheep/Market Goat Show on Saturday, July 25 at 10:30am
(Market Goat Showmanship will also be on Saturday, July 25)

Breeding Classes

1. 0-4 months Buck
2. 4-8 months Buck
3. 8-12 months Buck
4. 0-4 months Does
5. 4-8 months Does
6. 8-12 months Does
7. 12-24 months Does

Market Wethers (Weigh in before the show)

8. Lightweight market wether
9. Medium weight market wether
10. Heavyweight market wether

Overall Grand & Reserve Market Goat Champion (winners market classes 1-10)

11. Dam and Offspring
12. Best of Two Head - Any two animals exhibited in market classes 1-10. To be judged on quality and similarity. May be owned separately.
13. Best Animal Bred, Owned & Shown



GENERAL RULES FOR 4-H/FFA HORSE MEMBERS

1. General Rules for all members apply (page 5).
2. Stall assignments will be on a first come first served basis. Double stalls will also be assigned on a first come first served basis as space allows.
3. **Participants spending the week, please adhere to the following arrival schedule:** Campers being used during fair week must arrive between 1:00 – 4:00PM on Wednesday, July 22nd. Horses arriving on Friday **must be** in place by 9:00 pm that evening. Horses trucking in during the week must inform Wanda Kinney of arrival date/time BEFORE the day of show.
4. **Exhibitors will be asked to leave the fair for violation of rules, inappropriate behavior, or for violation of the 4-H Code of Conduct at the discretion of the 4-H Staff.**
5. 4-H/FFA members who keep their horses at the Fair must participate in the 4-H/FFA Horse Show on Thursday and select at least two more events scheduled as 4-H/FFA horse activities in which to participate.
 - a. Conflicts between 4-H/FFA horse activities and other 4-H activities may be resolved with written notification provided to the County 4-H Agent prior to the event.
6. If a member is staying at the fair with his/her horse, he/she is responsible for his/her horse at all times. If, for any reason, the member must leave the barn area, he/she must sign out with the barn manager and sign in upon his/her return and ask another member or leader to care for his/her horse. A clipboard will be posted for sign-ins.
7. By 10:00pm each night, members must be in sleeping area for the night. **Special passes must be obtained from Wanda Kinney if members need to be out past 10pm.** Passes must be returned to Wanda upon re-entry into sleeping area.
8. Riding in flat-soled sneakers will not be permitted. Youth may only ride in heeled shoes or sneakers. **ASTM/SEI helmets are required for all mounted classes at 4-H events.**
9. No bareback or double riding of any horse will be allowed, except in games.
10. Only 4-H/FFA members are to be riding the horses on exhibit.
11. Horses will not be allowed to run free in the ring under any circumstances.
12. Horses will remain in their stalls while the fair is open except when the barn is closed for the horses to move to and from the ring.
13. Horses should be fed at 7:00am and by 6:00pm each day.
14. The entire barn must be neat and clean at all times, this includes stalls, barn aisles, and tack area.
15. RESPECT other people's property and do not leave anything on the ground, where it can be destroyed.
16. NO ONE EXCEPT FOR THE MEMBER, LEADER OR PARENT WILL BE ALLOWED IN ANY HORSES STALL AT ANY TIME, FOR ANY REASON!
17. Schooling will be allowed from 8-10am and 4-6pm when no shows are taking place. **Additional schooling times will be posted in the barn during fair week by Wanda Kinney.** Schooling must be done under the direct supervision of a leader, parent, or riding instructor. Barn gates will be closed during this time.
18. Shoes must be worn in the barn area.
19. No dogs are allowed on the fairgrounds except at the dog/pet show.
20. An unthrifty horse is ineligible to be exhibited or shown at fair.
21. The State 4-H Horse Show rulebook governs this show.
 - These rules were created for the safety of all members, project animals, exhibitors, and spectators and they must be abided by.
 - Leaders will always be in the barn area to help any member needing assistance.
 - Problems that arise during the fair must be brought to the attention of the 4-H Staff.

The original 24 MONTH Coggins certificate must be presented to Wanda Kinney or Ann Thomas prior to a horse entering the horse barn. Immediately post a copy on the front of the horse's stall for the duration of the fair. Original Coggins must accompany horses when traveling to and from fairgrounds. The 4-H Horse Health Form must be completed for the current year and on file at the 4-H Office by June 30.

Horse Entry Form: <https://forms.gle/1w1YVBhjXZ5ajw856>

4-H/FFA MINIATURE HORSE SHOW

Monday, July 27 at 2 pm
Superintendent: Wanda Kinney

1. Junior Miniature Halter
2. Senior Miniature Halter
3. Cloverbud Miniature Halter
4. Junior Showmanship
5. Senior Showmanship
6. Cloverbud Showmanship
7. Junior Trail
8. Senior Trail
9. Cloverbud Trail
10. Junior Jumping
11. Senior Jumping
12. Cloverbud Jumping
13. Junior Hunter Jumper
14. Senior Hunter Jumper
15. Cloverbud Hunter Jumper

Junior (Grade 4-8 as of September 2025)

Senior (Grade 9-13 as of September 2025)

Cloverbud (Grade K-3 as of September 2025)

STALL DECORATING

Must be up by Monday, July 27th – will be judged that night. 1st, 2nd, 3rd place cash prizes.



4-H & OPEN HORSE COSTUME CLASS

Tuesday, July 28 at 7:00 PM

Only equines are allowed in the classes. An exhibitor may enter any and all classes in the division that may be appropriate to the costume being presented.

DIVISION A. Junior Division – open to all exhibitors through grade 8.

Classes: 1.Beautiful 2.Original 3.Funny 4.Authentic

DIVISION B. Senior Division - youth and adults grades 9 and over.

Classes: 5.Beautiful 6.Original 7.Funny 8.Authentic

Rosettes awarded to 1st–3rd place winners in each class.

Best in Division—Trophy

Best of Show—\$25.00 cash prize



GAMES ON HORSEBACK

Wednesday, July 29 at 1:00 PM

Superintendent: Wanda Kinney



- | | |
|------------------|----------------------------|
| 1. Egg & Spoon | 6. Pole Bending |
| 2. Key Hole | 7. Water Race |
| 3. Run & Lead | 8. Break your gait and out |
| 4. Cup Cake Race | 9. Ride-a-buck |
| 5. Barrel Race | |

Rules

1. See general rules for 4-H/FFA Horse Members, these rules apply to this show.
- 2. ASTM/SEI approved helmet, and proper riding boots required.**
3. Gate must be latched before starting.
4. The eligibility of a 4-H horse club member to participate will be determined by the Games Superintendent and will be based on the member's abilities.
5. Order and selection of classes is at the discretion of the superintendent.

4-H/FFA HORSE SHOW

Thursday, July 30 at 3:00 pm
Superintendents - Ann & Stacy Thomas

Rules:

1. Only Warren County 4-H/FFA members may enter. General rules for 4-H/FFA horse club members apply.
2. Members who have their horse stalled at the fair must enter this contest. Trailering in for this show will be allowed for 2026; however premiums will not be given to those trailering in.
3. Proper show attire must be worn. **ASTM/SEI helmets MUST be worn in all mounted classes (Western, English and Games Divisions).**
4. There are 4 divisions: English, Western, Games, and VSE. English, Western and Games will be divided into Senior and Junior. To be eligible for Championship points, all participants must enter a Grooming & Showmanship Class. Championship points will be counted for each division.
 - Classes that count towards the English Championship are English Grooming & Showmanship, English Halter Horse, English Pleasure Horse, English Hunt Seat Equitation and English Trail.
 - Classes that count towards the Western Championship are Western Grooming & Showmanship, Western Halter Horse, Western Pleasure Horse, Western Equitation, and Western Trail.
 - Classes that count towards the Games Championship are Western Grooming & Showmanship, Barrels, Poles and Keyhole. (In the event that someone participates in BOTH the Western and Games division, the points for Western Grooming and Showmanship will count for each division.)
 - Classes that count towards the VSE Championship are VSE Grooming & Showmanship, VSE Halter Horse, VSE In Hand Jumper, and VSE In Hand Trail.
5. If a member has a horse at the Fair and the horse is not eligible for a class (age, injury, etc.) another horse at the fair may be borrowed with permission from parents and/or legal guardians and a 4-H staff member.
6. **Classes 1 through 33 must be with a horse or a pony (not a VSE). VSE's may be entered in classes 34-45.**
7. The State 4-H Horse Show rulebook governs this show.

Cloverbud Division (Grades K-3 / Participation Ribbons Only)

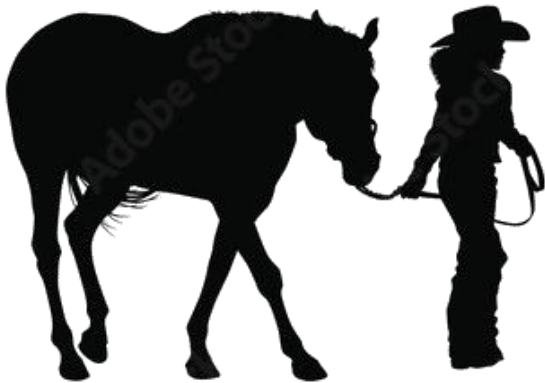
Junior (Grade 4-8 as of September 2025)

Senior (Grade 9-13 as of September 2025)

4-H/FFA HORSE SHOW CLASS LIST: NEXT PAGE

4-H/FFA HORSE SHOW CLASS LIST

1. Sr. English Grooming & Showmanship	23. Sr. English & Western Trail
2. Sr. English Halter Horse	24. Jr. English & Western Trail
3. Jr. English Grooming & Showmanship	25. Cloverbud Western Pleasure Horse
4. Jr. English Halter Horse	26. Cloverbud Western Equitation
5. Cloverbud English Grooming & Showmanship	27. Cloverbud English & Western Trail
6. Cloverbud English Halter Horse	28. Sr. Barrels
Tack Change - Break (if needed)	29. Jr. Barrels
7. Sr. English Pleasure Horse	30. Sr. Poles
8. Sr. Hunt Seat Equitation	31. Jr. Poles
9. Jr. English Pleasure Horse	32. Sr. Key Hole
10. Jr. Hunt Seat Equitation	33. Jr. Key Hole
11. Cloverbud English Pleasure Horse	Break (if needed)
12. Cloverbud Hunt Seat Equitation	34. VSE Sr. Grooming & Showmanship
Break (if needed)	35. VSE Jr. Grooming & Showmanship
13. Sr. Western Grooming & Showmanship	36. VSE Cloverbud Grooming & Showmanship
14. Sr. Western Halter Horse	37. VSE Sr. Halter Horse
15. Jr. Western Grooming & Showmanship	38. VSE Jr. Halter Horse
16. Jr. Western Halter Horse	39. VSE Cloverbud Halter Horse
17. Cloverbud Western Grooming & Showmanship	40. VSE Sr. In Hand Jumper
18. Cloverbud Western Halter Horse	41. VSE Jr. In Hand Jumper
Tack Change - Break	42. VSE Cloverbud In Hand Jumper
19. Sr. Western Pleasure Horse	43. VSE Sr. In Hand Trail
20. Sr. Western Equitation	44. VSE Jr. In Hand Trail
21. Jr. Western Pleasure Horse	45. VSE Cloverbud In Hand Trail
22. Jr. Western Equitation	



4-H/FFA HORTICULTURE EXHIBIT

1. General Rules for all members apply (page 5).
2. Exhibits including fresh cut flowers, herbs or arrangements may be brought to the **4-H Pavilion on Friday, July 24 from 2pm–7pm.**
3. All exhibits must have been selected by exhibiting member and be **market quality.** The exhibit may have been grown independently by member, or with adult help. Potted plants must have been under member's care since May 1. An exhibit, which requires more than one of the same species, should have all specimens uniform in size, shape, and color.
4. Exhibitor is responsible for exhibits that require special care during fair week (example: potted plants that must be watered). The Horticulture Superintendent reserves the right to reject any entry that is disease or pest ridden. All exhibits should be clean and wilt-free. All containers should be free of excess soil.
5. Member must provide correct containers for all exhibits. Masking tape nametag on bottom of container is advisable.
6. All entries must be labeled with a 4-H/FFA tag. Tags and judging sheets will be provided and must be attached to the entry when registering at the 4-H Fair Pavilion.
7. All exhibits should have common name and scientific name whenever possible.
8. Include on the entry form all entries you think will be ready.
9. All articles must be left on display until **6pm Saturday, August 1** in order to receive premiums and awards. When picking up your items, you may pick up your premium. Any items not picked up will be disposed of if not claimed, unless other arrangements have been made with the 4-H office staff.
10. Judges will select the exhibits to receive Best of Show, Honorable Mention and Best of Division. A Premier Exhibitor Award will be presented to the member with the most excellent ribbons in the show. (These awards are dependent upon the number of entries received).
11. An exhibitor may enter one exhibit per class with a maximum of twenty (20) entries in the Horticulture Show category.

Horticulture Exhibit Entry Form: <https://forms.gle/T76dk31yFKzCcCb8A>

Awards: Excellent - \$3.00 Very Good - \$2.00 Good - \$1.00

Cloverbuds will receive a participation ribbon

DIVISION 1 - HOME GARDEN VEGETABLES

In this division, judges are looking for market quality. List variety name whenever possible.

1. Beans - 5 specimens
2. Beets - 3 specimens, tops trimmed to 1 inch
3. Cabbage - 1 head
4. Carrots - 3 specimens, tops trimmed to 1 inch
5. Celery - 1 head, roots removed in a straight cut
6. Corn, sweet - 2 ears, husk and silk intact excess shank removed
7. Cucumbers - 3 specimens
8. Eggplant - 1 specimen
9. Garlic - 2 bulbs, top trimmed to 1 inch, base roots trimmed, dry outer scales intact
10. Lettuce - 1 head
11. Melons, etc. - 1 specimen
12. Kale - 5 leaves
13. Onions - 3 specimens, tops trimmed 1 inch, roots trimmed, outer scales intact
14. Peppers - 3 specimens, stems trimmed
15. Potatoes - 3 specimens
16. Pumpkins - 1 specimen
17. Rhubarb - 3 pulled stalks, trimmed, leave 2 inches of leaf at base
18. Rutabagas (turnips) - 3 specimens, tops trimmed
19. Squash, Summer - 1 specimen:
 - 19a. Green Zucchini
 - 19b. Yellow Crookneck
 - 19c. Yellow Straight neck
 - 19d. Specialty
20. Squash, Winter - 1 specimen
21. Swiss Chard - 5 leaves
22. Tomatoes - 3 specimens - no leaves or stem
23. Any other vegetable

DIVISION 2 - FRUITS

In this division, judges are looking for market quality. List variety name whenever possible.

24. Blackberries - ½ pint
25. Blueberries - ½ pint
26. Grapes - 1 bunch
27. Peaches - 3 specimens
28. Plums - 3 specimens
29. Raspberries - ½ pint
30. Strawberries - ½ pint
31. Any other fruit



DIVISION 3 - HERBS

32. 3 specimens. Please bring in a small jar to display them in.
 - a. Basil
 - b. Spearmint
 - c. Chives
 - d. Dill
 - e. Oregano
 - f. Lavender
 - g. Thyme
 - h. Other

DIVISION 4 - SPECIAL CLASSES

33. Largest on exhibit, by weight. You may bring a separate exhibit just for this class, no pre-registration will be required.
34. Unusually shaped vegetable or fruit.
35. Vegetable and fruit creatures. Must be made of either a fruit or vegetable.
36. Vegetable and/or fruit collection. Both the color scheme and the container will be judged as part of the exhibit. Use best market quality specimens. Any size exhibit.

DIVISION 5 - OUTDOOR PLANTS

Container will not be judged as part of the exhibit except in class 39.

37. Annuals - 5 stems or blooms of one specie in container.
38. Perennials - 5 stems or blooms of one specie in container.
39. Cut flower arrangement: may use purchased fresh flowers. Container will be judged as part of the exhibit.
40. Corsage fresh or dried flowers
41. Any single variety potted outdoor plant
42. Any group or combination of outdoor potted plants

DIVISION 6 - INDOOR GARDENING

Container will be judged as part of the exhibit.

43. Flowering plants - (in or out of bloom) one variety per container
44. Foliage plants - 1 variety per container
45. Potted herbs - 1 variety per container
46. Dish gardens
47. Terrarium



DIVISION 7 - MISCELLANEOUS PROJECTS

48. Any exhibit, display, poster, essay, homemade equipment, photographic history, diorama, experiment, collections, diagram, etc. which illustrates any principle or idea related to horticulture.

4-H/FFA Livestock Costume Contest

Sunday, July 26 - 6PM

Rules

1. General Rules for all members apply (page 5).
2. Pre-registration is NOT required, be at the show ring at 6PM dressed and ready!
3. Entrant must be able to hold/handle the animal on their own.
4. Household pets are not eligible to enter. Accepted animals are: Rabbits/cavy, poultry, sheep, goats, beef, dairy cattle, mini horses, and seeing eye dogs.
5. Any animal entered must be one that is being exhibited and have health papers.

Classes:

- A. Cutest
- B. Funniest
- C. Scariest
- D. Creative
- E. Judges Choice



4-H PHOTOGRAPHY EXHIBIT

1. General Rules for all members apply (page 5).
2. All members must submit an entry form specifying each item by July 1st. **Goal sheets are now part of the entry forms and MUST be completed upon registration.**
3. A club member may only enter one item per class with no duplicate items in a class, for a total of ten (10) items for this department; no exceptions for members in more than one club.
4. Photographs entered in this exhibit must have been taken by a 4-H member during the current project year.
5. Items/Displays must be brought to the 4-H Pavilion across from the Livestock Show Barn on the Fairgrounds on Friday, July 24 from 2 - 7pm.
6. All articles must be left on display until **6pm on Saturday, August 1** in order to receive premiums and awards. When picking up your items, you may pick up your premium. Any items not picked up will be disposed of if not claimed, unless other arrangements have been made with the 4-H office staff.
7. Photographs must be at least a 5"x7" enlargement and properly mounted. Properly mounted constitutes: mounted on a firm backing with a minimum of 8"x10" matting. PLEASE NO FRAMES!!! (Photo books will not be accepted)
8. All items must have entry tags securely attached, these will be provided when you drop off your items.

Photography Exhibit Entry Form: <https://forms.gle/BrJgF9bf6gnzDDfP7>

Awards: Excellent - \$3.00 Very Good - \$2.00 Good - \$1.00

Cloverbuds will receive a participation ribbon

Class Numbers with descriptions:

<p>1. Animals – Domestic</p> <p>Photos focusing on the various animals that have been tamed and are found in a human environment. To be considered domesticated, the animal must have their behavior, life cycle, or physiology systematically altered as a result of being under human control for many generations. (Examples include: dog, sheep, pig, goat, cow, cat, chicken, horse, alpaca, goose, duck, hamster, rabbit, etc.)</p>	<p>2. Animals – Wildlife</p> <p>Category focuses on animals not tamed or domesticated and commonly found in the wild throughout the country and world. Photos can be wildlife in nature, zoos, and/or petting zoos. (Examples include: deer, snake, insects, rodents, elephants, lions, tigers, and bears, oh my! etc.)</p>
<p>3. Catch-All</p> <p>Category for photos that do not fit into one of the other categories. This includes such photos as still-life, motion-blur, Polaroid transfers, and hand-colored photos. (Examples include: Polaroid image & emulsion transfers, still-life, long exposure zoomed images, and painting with light.)</p>	<p>4. Details & Macro</p> <p>Getting in close is the name of the game for this category. We welcome pictures of small details that suggest a larger story. This is the place for macro photographs (although a macro image of a flower might equally go into the flower category). (Examples include: detail of a knot, a lock, or an abstract close-up – anything as long as it is a tight composition of a detail. Macro examples include flowers, insects, stamps, etc)</p>
<p>5. Digital Darkroom</p> <p>Photos are for digital art – images created or drastically altered in software such as Adobe Photoshop/Elements®. Although digitally manipulated images are also allowed in the other categories, this is a category exclusively showcasing such art. If the digital darkroom work is the main attraction of the photo, or plays a big part, enter it here. (Examples include: Photoshop® composites and creations, images greatly manipulated with a variety of filters, photos with artistic borders, photos stitched into a panoramic, etc.)</p>	

<p>6. Dominant Color</p> <p>Photos with a dominant color. The dominant element in the image must be a specific color, such as red, yellow, blue, white, black, green, etc.</p> <p>(Black & White photos and duotones are excluded from this category.)</p>	<p>7. Elements of Design</p> <p>Images use of graphic elements of design. Photos that showcase line, shape, pattern, form, texture, perspective, etc. Photo can consist of any subject matter. Category is not for graphic illustrations made in commercial programs (i.e. Adobe Illustrator®) nor for extreme digital creations.</p> <p>(Examples include: perspective, line, pattern, etc.)</p>
<p>8. Food</p> <p>Category is a still life specialization of photography, aimed at producing attractive photographs of food for use in such items of advertisement, packaging, menus, and/or cookbooks. No photos of alcoholic beverages are allowed.</p> <p>(Examples include: Thanksgiving dinner, cakes/pies, fruits, place settings, sandwiches, ingredients, etc.)</p>	<p>9. Marine/Aquatic</p> <p>Photos of any living organisms in bodies of either fresh or ocean (salt) water. (Photos taken of marine life in an Aquarium are acceptable.)</p> <p>(Examples include: fish, stingrays, whales, starfish, coral, etc.)</p>
<p>10. Nature and Landscape</p> <p>The focus of this category includes landscaped, outdoor scenes, nature images, sunsets, urban landscapes, seascapes, cityscapes, and farms. Images focus on the beauty of the outdoors.</p> <p>(Examples include: landscapes, scenes, outdoors, etc.)</p>	<p>11. Night Photography</p> <p>Photos taken outdoors between dusk and dawn. Generally these photos are achieved by using artificial light or using a long exposure. This category can include any subject as the focus should be on the skill and technique used to acquire the photograph.</p> <p>(Examples include: buildings/structures, animals, plant/flora, people, etc.)</p>
<p>12. People</p> <p>Photos focus from all walks of life, parenting and family, children, babies, models/fashion, sports, and couples.</p> <p>(Examples include: kids and family, models, sports, etc.)</p>	<p>13. Plant/Flora</p> <p>Photos of interesting, unique, and beautiful flowers and flora. Photography can occur outdoors or indoors. Photo subject should be that of a single flower, plant, bush, tree, etc. Large collections of plant/flora should be considered for entry into the Nature & Landscape category.</p> <p>(Examples include: a rose, an upward shot of a tree, a flower bouquet, etc.)</p>
<p>14. Storyboard</p> <p>A storyboard is one digital entry that contains three photos and minimal text that tells a story. The story should be easily understood by the viewer.</p> <p>(Examples include: three images depicting the blooming of a rose bud but at different stages, with the title Beginning of Beauty.)</p>	<p>15. Cell Phone</p> <p>Any photos taken from a cell phone or phone camera regardless of subject are to be entered in this class.</p> <p>(Examples include: people, nature, flowers, animals, scenery, etc.)</p>



4-H/FFA POULTRY & GAME BIRD SHOW

Wednesday, July 29 at 6:00 PM

General Poultry & Game Bird Show Rules

1. Open to Warren County 4-H and FFA members.
2. General Rules for all members apply (page 5).
3. Members must own and care for their animal for at least 60 days prior to the show or animal will be disqualified from show.
4. Poultry and game bird exhibitors are required to check that their animal has feed and water at least once daily. Feed and water containers should be large and heavy enough not to tip or must be attached to the cage. Animal care will be the responsibility of the exhibitors.
5. No breeding will be allowed at the fair.
6. Substitutions may be made only in the class that the animal was registered.
7. Special Cloverbud Classes will be held at the beginning of each show for all cloverbud 4-H members (grades K-3). All cloverbuds will receive a participation ribbon.
8. All participants (as well as Cloverbud members) must be pre-registered by July 1st.
9. Cooped animals must be on exhibit by 1:00 pm day of show. All Fair cages must be washed by poultry and game bird owners before use. When finished, all cages must be washed and stacked back in the barn. 4-H/FFA/WCFF staff is not responsible for animals left after 9:00 PM day of show. Each family will be designated a space and separated from other birds for biosecurity purposes.

* * * * *

Poultry Show Rules

1. General rules for poultry and game bird shows apply.
2. Exhibitors may bring in their poultry day of show at 1pm to receive your exhibitor tags and be assigned cage(s).
3. For the Poultry Division, purebred, mixed breed, commercial, fancy or meat birds may be exhibited.
4. Poultry will be judged according to The Standard of Perfection of the American Poultry Assoc. and the American Bantam Assoc.
5. The area will be roped off during judging. Only exhibitors will be allowed in the area with the judge to hear his comments. Parents are asked to refrain from asking questions before and during the judging.
6. Poultry exhibitor must inspect cages daily for cleanliness and dry shavings (shavings are provided by the Fair Association.) The Superintendent reserves the right to request the exhibitor clean cage if necessary.
7. ALL birds must be pullorum tested. Only negative birds may be exhibited. **Pullorum testing date/time/location will be announced in an email to all who register for this show.**
8. Each 4-H member may submit 1 dozen white, brown and/or green eggs to be judged.

Poultry & Game Bird Entry Form: <https://forms.gle/PLHwV4ey9JYhHGkE7>

Showmanship:

Cloverbud Showmanship (grades K-3)

Jr. Showmanship (grades 4-8)

Sr. Showmanship (grades 9-13)

Classes:

Division 1 – STANDARD CHICKENS	1. commercial	2. ornamental
Division 2 – BANTAM CHICKENS	1. commercial	2. ornamental
Division 3 – WATERFOWL/LARGE FOWL	1. ducks	2. geese 3. turkeys
Division 4 – OTHER POULTRY	1. doves	2. Pigeons
Division 5 – BACKYARD CHICKEN (mixed breeds)	1. commercial	2. ornamental

GAME BIRD Show Rules

1. General rules for poultry and game bird shows apply.
2. The area will be roped off during judging. Only exhibitors will be allowed in the area with the judge to hear his comments. Parents will be asked to refrain from asking questions before and during the judging.
3. Game birds must be kept in cages at all times.
4. Only NJ owned birds may be exhibited.
5. Some game birds require a permit from NJ Fish Game and Wildlife. For permit call 609-292-2965.
6. Game Birds bred for sport that are not normally caged and are raised for minimum human contact – may arrive day of show and leave after judging is completed.

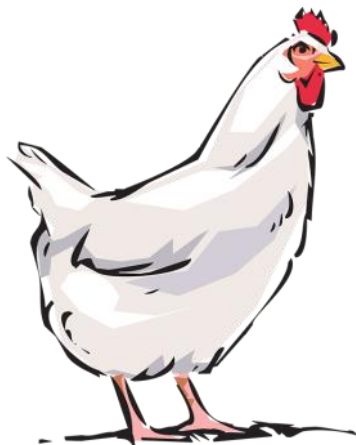
Classes:

1. Peafowl
2. Quail
3. Pheasant
4. Other

AWARDS FOR POULTRY & GAME BIRDS:

Excellent \$3.00 Very Good \$2.00 Good \$1.00

Cloverbuds receive a participation ribbon



4-H PUBLIC PRESENTATIONS

Monday, July 27	3 pm	4-H Pavilion
Tuesday, July 28	3 pm	4-H Pavilion
Wednesday, July 29	3 pm	4-H Pavilion
Thursday, July 30	6 pm	4-H Pavilion

Rules and Regulations

1. All presenters must pre-register by July 1.
2. Warren County 4-H club members may give a presentation on any topic, for 5-15 minutes in length. Cloverbuds may present for 3-5 minutes.
3. Either individual or team presentations may be given. (No more than 2 presenters make up a team)
4. Types of presentations: demonstration, illustrated talk, performing arts, or formal speech. Info available in 4-H office explaining each type.

Public Presentations Entry Form: <https://forms.gle/CtG1itHsvDGwWSK7A>

AWARDS

Score 90-100 Excellent

Score 80-89 Very Good

Score 79 & below Good



4-H/FFA RABBIT SHOW

Sunday, July 26 at 3:00 PM

RABBIT SHOW RULES

1. Open to Warren County 4-H and FFA members.
2. General Rules for all members apply (page 5).
3. Members must own and care for their animal for at least 60 days prior to the show or animal will be disqualified from show.
4. Participants must read and understand the rules of the show in which they choose to participate.
5. Exhibitors may bring in their rabbits the day of show Sunday by 10am to receive your exhibitor tags and be assigned cage(s). **All rabbits entered must stay until 9:00 pm that day or risk showing at the fair in the future.**
6. Rabbit exhibitors are required to check that their animal has feed and water at least once daily. Feed and water containers should be large and heavy enough not to tip or must be attached to the cage and are provided by the exhibitor. Animal care will be the responsibility of the exhibitors. Sipper bottles are suggested for rabbits.
7. No breeding will be allowed at the fair.
8. Substitutions may be made only in the class that the animal was registered.
9. Animals must have a tag on their cage to identify breed and owner. Tags will be available in the barn.
10. Special Cloverbud Classes will be held at the beginning of each show for all cloverbud 4-H members (grades K-3). They may bring one animal to exhibit at the show. All cloverbuds will receive a participation ribbon.
11. Mixed and purebred rabbits may be entered. List the breed of the rabbit on the entry form. If mixed breeds indicate so. Before entering the fairgrounds, all rabbits must be tattooed in the left ear or rabbit will be disqualified.
12. Special rabbit classes: a) Doe and Litter: Does must have bunnies between the ages of 6 and 8 weeks.
13. Best of Show and Best Reserve Awards for all breeds. Senior, Junior and Cloverbud Showmanship classes will be held.
14. Exhibitors must see 4-H staff superintendent two hours prior to show for scratches and changes.
15. Water containers MUST be sipping bottles secured to cage side or HEAVY ceramic bowls. No plastic bowls - they tip over.
16. No Premiums are awarded for Rabbit Showmanship, however participants will receive a coupon for a free milkshake from the Teen Council Milkbooth.

Rabbit Show Entry Form: <https://forms.gle/PrEnp46HLWAvqxTA7>

Awards: Excellent \$3.00 Very Good \$2.00 Good – \$1.00

Cloverbuds will receive a participation ribbon

4-H REPTILES AND POCKET PETS EXHIBITION

Sunday, July 26 - 12 PM

Rules

1. General Rules for all members apply (page 5).
2. NO venomous reptiles allowed.
3. Reptiles must be free of external parasites (i.e., ticks, mites, etc.). They must be clean with no open wounds or they will not be allowed.
4. Exhibitors will supply their own food and heating devices, if required, and an escape proof container.
5. All cages must be clear, animals will not be permitted to leave their cages while on the fairgrounds. **The exhibit must be secure to prevent the animal's escape.**
6. Any animal that requires a permit, must submit a copy to the Warren County 4-H office. To find out if your project animal is in need for a permit, visit https://www.state.nj.us/dep/fgw/exotic_apps.htm. It is very important to contact the Warren County 4-H office if you have an exotic animal and are unsure what health/permit requirements are required. Exotics may include Reptiles, Amphibians, Crustaceans, Ferrets, Sugar Gliders, etc.
7. Up to 5 animals may be exhibited by one 4-H member.
8. **Members entering in this exhibition can enter the cage decorating contest.**

Accepted entries:

Snakes, Turtles, Frogs, Lizards/Geckos, Hermit Crabs, Hedgehogs, Ferrets, Sugar Gliders.

Reptiles and Pocket Pets Entry Form: <https://forms.gle/GLngJtaHN2xTgRww5>

Awards: All participants will receive a participation ribbon and a coupon for a free milkshake from the Teen Council Milkbooth.



4-H SEWING & NEEDLEWORK EXHIBIT

1. General Rules for all members apply (page 5).
2. All members must submit an entry form specifying each item by division and class number by July 1st.
3. Items/Displays must be brought to the 4-H Pavilion across from the Livestock Show Barn on the Fairgrounds on Friday, July 24 between 2 - 7pm.
4. All articles must be left on display until **6pm on Saturday, August 1** in order to receive premiums and awards. When picking up your items, you may pick up your premium. Any items not picked up will be disposed of if not claimed, unless other arrangements have been made with the 4-H office staff.
5. A 4-H member may enter up to five (5) items per year, but each one must be from a different class.
- 6. The goal sheet is now part of the entry form and MUST be completed upon registration.**
7. Exhibitors must have made all articles at home, in school or in 4-H during the current 4-H project year.
8. It is recommended that items be displayed in a clear plastic bag.

Sewing & Needlework Exhibit Entry Form: <https://forms.gle/Ztdz2JrDCcdGtE1P6>

Classes:

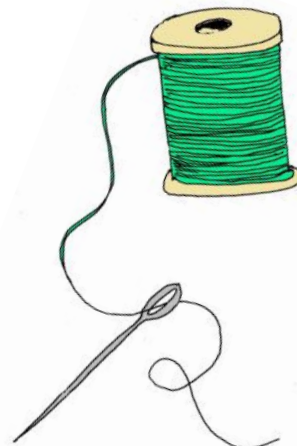
- | | |
|--|-----------------------|
| 1. Tote Bag / Drawstring Bag / Beach Bag | 11. Needlepoint |
| 2. Pillow | 12. Quilt - pieced |
| 3. Table Runner | 13. Quilt - appliqued |
| 4. Placemat | 14. Quilt - square |
| 5. Knitting item | 15. Punch Needle |
| 6. Crochet item | 16. Latch Hook |
| 7. Embroidery item | 17. Weaving |
| 8. Crewel item | 18. Braided Rug |
| 9. Stamped Cross-Stitch | 19. Felted wool item |
| 10. Counted Cross-Stitch | 20. Miscellaneous |

Premiums & Ribbons for Sewing & Needlework

Excellent \$5.00 Very Good \$3.00 Good \$1.00

Best of Show and Honorable Mention - rosette

Cloverbuds will receive a participation ribbon



4-H/FFA SHEEP SHOW

Saturday, July 25 at 10:30am (combined with WCFF Open Sheep Show)

Rules

1. General Rules for all members apply (page 5).
2. For the safety of the animals and general public, all animals must be on exhibit in the barn by 8 am on the day of show and remain on the fairgrounds until 9pm day of show or risk showing at the fair in the future.
3. Exhibitors must belong to a Warren County 4-H Club or FFA Chapter.
4. Only designated herdsman and adults, authorized by the Warren County Farmers' Fair Association, FFA Advisor, and County 4-H Agent, will be allowed to remain on the fairgrounds overnight with proper permission forms on file with the 4-H office. Herdsmen are responsible for following the RCE guidelines for overnight events. It is the responsibility of 4-H leaders and advisors to find responsible herdsman.
5. Purebreds must be able to show proof of registry to Show Superintendent.
6. Members must own or lease the animal by May 1 of the current year. Lease forms must be on file at the 4-H office by May 1 of the current year.
7. The superintendent shall consult with the attending veterinarian regarding removal of any unhealthy animal. 4-H Staff must be notified of unhealthy animals leaving the fairgrounds. See health regulations in front of book.
8. Sheep may be shown at halter or hand in all classes including showmanship classes. Whether or not a halter is used will be left to the judgment of the exhibitor and will have no bearing on judging any class.
9. Exhibitors will be required to strip their pens before leaving fairgrounds. ALL members are responsible to help put up and take down pens prior to and after their show.
10. All sheep must be identified by USDA approved official identification (ear tag and/or approved registry tattoo).
11. The Wool and Meat Breeds will be held separately. Meat classes will follow the wool classes.
12. Dress for the show and sale will be a plain, clean, collared shirt tucked into clean blue jeans, neatly groomed. Suitable footwear required. Attire should not denote a herd, farm, 4-H club, or FFA Chapter.
11. The 4-H/FFA sheep show is being run in conjunction with the Open Sheep/Market Goat Show. 4-H Classes will be mixed in with Open classes.

Sheep Show Entry Form: <https://forms.gle/DNttvnuJuNRiPpy9>

- AWARDS -

Excellent - \$8.00 Very Good - \$5.00 Good - \$2.00

Cloverbuds will receive a participation ribbon

DIVISION I SHEEP SHOWMANSHIP

1. Experienced - six or more years of showing
 2. Intermediate - fourth and fifth years showing
 3. Beginner - second and third years showing or first year if 8th-13th grade
 4. Novice - first year showing if in 4th - 7th grade
- Grand Champion Showman** (best of 1-4)
5. Cloverbud Showmanship for grades K-3 only
 6. Best Fitted Meat Breed - Animals in Best Fitted Sheep Class must be owned and fitted by the 4-H'er showing the animal.
 7. Best Fitted Wool Breed - 6 and 7 will be selected after Grand Champion in each category.

SHEEP CLASSES (The following classes will be held for wool and meat classes.)

DIVISION II. PUREBRED RAMS

8. Yearling - born between September 1, 2024 and August 31, 2025
9. Fall Lambs - born between September 1, 2025 and December 31, 2025
10. Spring Lambs - born between January 1, 2026 and June 1, 2026 (60 days before show)

Grand Champion and Reserve Champion Purebred Ram (winners of classes 8-10)

DIVISION III. PUREBRED EWES

11. Aged - born before September 1, 2024
12. Yearling - born between September 1, 2024 and August 31, 2025
13. Fall Lambs - born between September 1, 2025 and December 31, 2025
14. Spring Lambs - born between January 1, 2026 and June 1, 2026 (60 days before show)

Grand Champion and Reserve Champion Purebred Ewe (winners of classes 11-14)

DIVISION IV. COMMERCIAL RAMS

15. Yearling - born between September 1, 2024 and August 31, 2025
16. Fall Lambs - born between September 1, 2025 and December 31, 2025
17. Spring Lambs - born between January 1, 2026 and June 1, 2026 (60 days before show)

Grand Champion and Reserve Champion Commercial Ram (winners of classes 15-17)

DIVISION V. COMMERCIAL EWES

18. Aged - born before September 1, 2024
19. Yearling - born between September 1, 2024 and August 31, 2025
20. Fall Lambs - born between September 1, 2025 and December 31, 2025
21. Spring Lambs - born between January 1, 2026 and June 1, 2026 (60 days before show)

Grand Champion and Reserve Champion Commercial Ewe (winners of classes 18-21)

DIVISION VI. MARKET LAMB

22. Market Lambs

DIVISION VII. EXHIBITOR FLOCK

23. A flock of three animals. 2 ewes, 1 ram, any age. All animals owned by the exhibitor.

DIVISION VIII. BEST ANIMAL BRED, OWNED AND SHOWN

24. Best Animal Bred, Owned and Shown by Exhibitor - (Dam must have been owned by exhibitor at time of breeding)



4-H SHOOTING SPORTS AIR RIFLE MATCH

Saturday, August 1 – 2:00 PM

The 4-H Air Rifle Match gives 4-H shooting sports members a chance to compete on a county level. This event is solely an individual competition and consists of 2 events. By entry in this event, the 4-H member is acknowledging that they are knowledgeable and proficient in the safe use of the equipment and the fundamentals of the event. The superintendent may dismiss or disqualify a participant if believed the participant does not demonstrate the basic proficiency and knowledge.

Air Rifle Match Entry Form: <https://forms.gle/iFmK8wwKr5waHvd39>

Rules:

1. Air Rifle Match is open to Warren County 4-H shooting sports club members.
2. Check in at 1:30 p.m. at the range.
3. Air rifles, ammunition and targets will be provided by the sponsoring club.
4. The order of fire will be determined by the superintendent.
5. Shoes are restricted to soft, low cut, athletic or street shoes that do not extend above the ankles. No boots are permitted. No shooting jackets are permitted. Up to two sweatshirts are allowed. Shooting shirts and 4-H shooting sports vests are permitted.
6. Each shooter may have one spotter with them on the firing line who may have scopes and binoculars to advise the shooter where shots are hitting. The spotter will also keep time and advise the shooter in a quiet voice. The spotter may not touch the shooter or the shooter's equipment after the shooter assumes their position on the firing line.
7. The use of cell phones or other electronic communication devices is not permitted on the range.
8. Safety is a priority. Anyone may be dismissed from the range for unsafe behavior. The score may be forfeited, participant disqualified, or spectators barred at the discretion of the superintendent.
9. Eye protection is required. All participants and other persons on or in the immediate vicinity of the firing line, including coaches, range officials, and any spectators must wear adequate eye protection (glasses or goggles). The equipment must protect both eyes.

NRA Single- Position Sporter Air Rifle Competition

Target: NRA AR 5/10 at 7 m (23 ft.)

10 Course of Fire. 10 shots standing position; (10 record shots)

Time Limits: Juniors (4-8 grade) 12 minutes.

Seniors (9-13 grade) 10 minutes.

Awards

Junior:	Excellent 100-61,	Very Good 60-21,	Good 20 and below
Senior:	Excellent 100-71,	Very Good 70-31,	Good 30 and below

NRA Sporter Air Rifle Silhouette Event

Target: 1/10 scale, metallic silhouettes at 7 m (23 ft.)

Course of fire: chicken, pig, turkey, ram

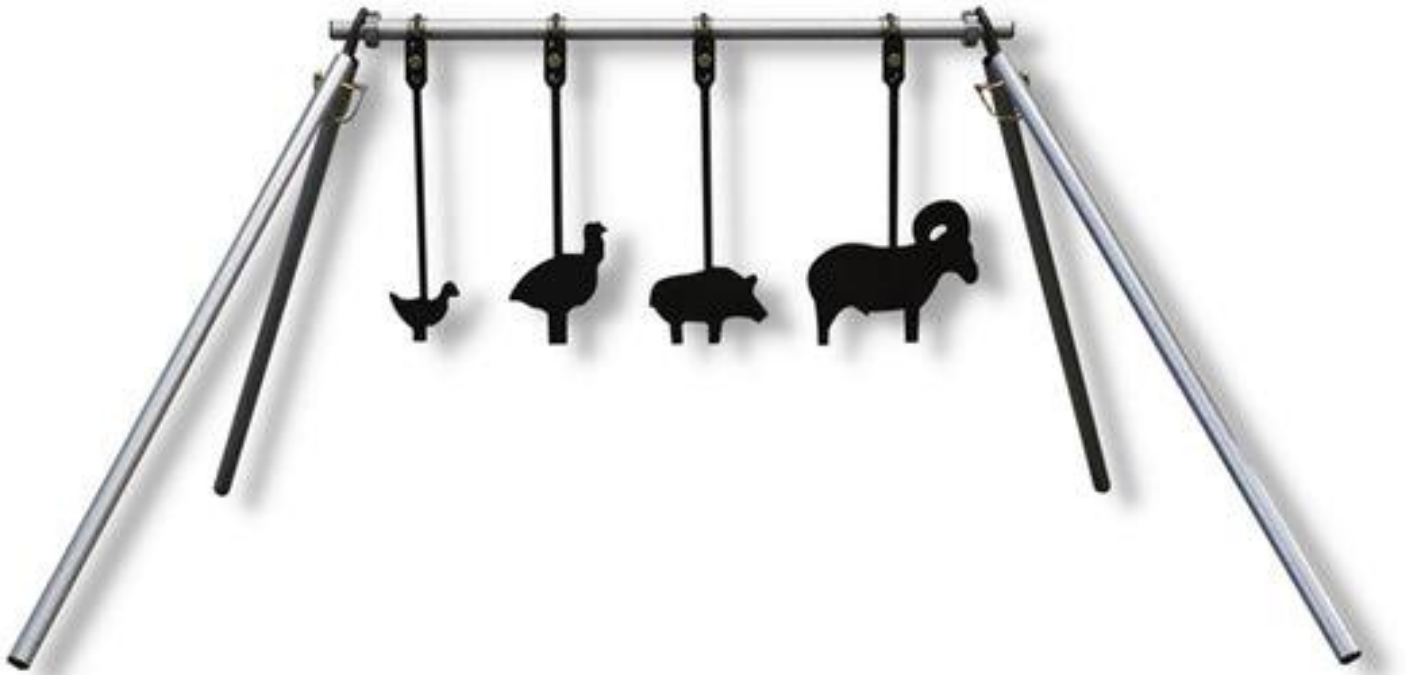
Time limits: Junior (4-8 grade): 30 second ready time and 5 minutes firing time

Senior (9-13 grade): 15 second ready time and 2½ minutes firing time

- Target must be knocked over from its stand in order to be scored as a hit. Targets not knocked over or hit out of order will be scored as misses.
- Any standing position without artificial support is acceptable. The rifle will be supported by the hands and one shoulder. All parts of one hand must be forward of the pistol grip. The chin may not rest on top of the comb.

Awards

Junior:	Excellent 4-3,	Very Good 2,	Good 1 and below
Senior:	Excellent 4,	Very Good 3,	Good 2 and below



4-H/FFA SMALL ANIMAL SHOW

Sunday, July 26 - 2:30 PM

Rules

1. General Rules for all members apply (page 5).
2. Gerbils, mice, cavy, rats, hamsters, chinchillas, ferrets and other warm blooded small animals/cavies may be entered in this show. They will be judged separately by species. These animals may be brought to the fair prior to the show and must be removed at 9pm the same day. Animals must stay in their own cages. Cloverbud classes will be held.
3. Litter Classes: a) **Guinea Pigs:** must be at least 3 weeks b) **Small Animal:** 2 to 3 weeks
4. Best of Breed & Best of Show
Cavy will be divided by Sex/Age/Weight
Sex: Male – Boar, Female – Sow
Age & Weight: Junior – up to 4 months, 12-22 ounces; Intermediate – 4-6 months, 22-32 ounces; and Senior – over 6 months and over 32 ounces
(For example: Sow Junior, Sow Intermediate, Sow Senior or Boar Junior, Boar Intermediate, Boar Senior)
5. Small Animal Showmanship classes:
 - a. Cloverbud (grades K-3)
 - b. Junior (grades 4-8)
 - c. Senior (grades 9-13)
6. All other small animal species will be judged together as a species regardless of sex, age or weight. (All Chinchillas will be judged as a class, all hamsters will be judged as a class, etc.)

Small Animal Show Entry Form: <https://forms.gle/cDLAAUGqLnwpTvNS8>

Small Animal Awards: Excellent \$3.00 Very Good \$2.00 Good \$1.00

Rosettes for Best of Breed, Best of Show & Showmanship

Cloverbuds will receive a participation ribbon



4-H WILDLIFE AND FISHERIES EXHIBIT

(Including Marine Science)

1. General Rules for all members apply (page 5).
2. All members must submit an entry from specifying each item by July 1st.
3. Items/Displays must be brought to the 4-H Pavilion across from the Livestock Show Barn on the Fairgrounds on Friday, July 24 from 2 - 7pm.
4. All articles must be left on display until **6pm on Saturday, August 1** in order to receive premiums and awards. When picking up your items, you may pick up your premium. Any items not picked up will be disposed of if not claimed, unless other arrangements have been made with the 4-H office staff.
5. All exhibits must have common and scientific names listed.
6. Any member can exhibit items relating to wildlife and fisheries projects including, specimens or drawings of animals, plants or habitats, lifecycles, etc.

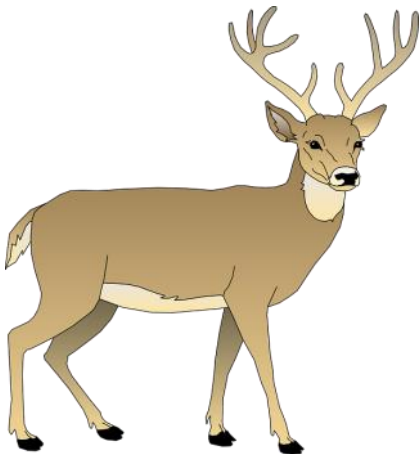
CLASSES

1. Habitat
2. Organisms
3. Career Exploration
4. Community Involvement
5. Miscellaneous:
 - a. geology
 - b. other marine related entry

Wildlife and Fisheries Entry Form: <https://forms.gle/xooSYYEkf3BQ9ziWA>

Awards & Ribbons for Wildlife and Fisheries

Excellent \$3.00 Very Good \$2.00 Good \$1.00
Best of Show and Honorable Mention - rosette
Cloverbuds will receive a participation ribbon





2026 FAIR AND SHOW ANIMAL HEALTH REGULATIONS, RECOMMENDATIONS, AND FORMS

Contents

Chapter A: General information section	2
Chapter B: Emerging diseases and pests information	9
Chapter C: Species-Specific Health Regulations and Recommendations	15
New Jersey Cattle	15
Imported Cattle	15
New Jersey Goats	16
Imported Goats	17
New Jersey Horses	18
Imported Horses	18
New Jersey Camelids (Llama/Alpaca)	19
Imported Camelids (Llama/Alpaca)	19
New Jersey Poultry and Hatching Eggs	19
Imported Poultry and Hatching Eggs	21
New Jersey Sheep	22
Imported Sheep	22
New Jersey Swine	23
Imported Swine	23

Chapter A: General information section

1. **Background:** This document provides the New Jersey Department of Agriculture's (NJDA's) animal health requirements and recommendations for all animal exhibitions (shows) in the state, including county and community fairs. This document is divided into Requirements and Recommendations for both New Jersey animals and animals arriving from out of state for each livestock species ([Chapter C](#)). The Requirements listed in this document are mandated by law. While not legally mandated, these Recommendations represent best practices and the scientific expertise of the state animal health officials. Fairs and shows are strongly encouraged to adopt these Recommendations. Individual fair/show management may impose additional or more stringent health requirements at their own discretion. All exhibitors are encouraged to check with the management of each fair/show in advance to ensure compliance with all their requirements. It is recommended that fair/show organizers include statements on registration and promotional materials that clearly indicate that participating in the event is at one's own risk and that of their animals' health. These requirements and recommendations are a shared responsibility of show management and exhibitors to protect human and animal health in the state.

2. **Certificates of Veterinary Inspection (CVI): Certificates of Veterinary Inspection (CVI):** This is an official document issued by an accredited veterinarian certifying that the animals identified on the document have been inspected and were found to satisfy the regulations pertaining to their intended movement.
 - a. CVIs are required for all out-of-state camelids (alpaca/llama), cattle, equine, goats, sheep, and swine being imported into New Jersey for a fair or show. They may also be used for the exhibition of imported poultry. A CVI serves as verification of animal identification, an attestation of health, an attestation of a Veterinary-client-patient-relationship (VCPR), and documentation of all applicable vaccination and testing.
 - b. The requirements for a CVI are set by the United States Department of Agriculture (USDA) and are in the Code of Federal Regulations (CFR), which can be referenced at the following link: www.ecfr.gov/current/title-9/chapter-I/subchapter-J/part-161/section-161.4
 - i. Per the CFR, the CVI must be serialized and include the following:
 1. Complete name and address of the exhibitor,
 2. Complete address of the origin premises,
 3. **Complete name and complete address of the fair/show to be attended (a separate CVI needs to be completed for each individual fair/show to be attended).**

4. Species, breed, sex, age of animals, and official identification. See [Chapter C: Official Identification](#) section examples of appropriate official identification based on species.
 5. A statement by the examining veterinarian that they personally inspected the animals described on the CVI and found them free from visible clinical signs of infectious, contagious, and/or communicable disease or known exposure thereto within 30 days of shipment.
 6. A copy of the CVI is provided to the owner, and the appropriate remaining CVI copies, regardless of whether they are completed for interstate (across state lines) or intrastate (within New Jersey) movement, must be submitted to the NJDA Division of Animal Health at P.O. Box 400, Trenton, NJ 08625.
- ii. CVIs are valid for 30 days from the date of examination.
- 3. VS (Veterinary Services) Form 9-3 or VS Form 9-2:** May be used for exhibition of poultry in place of a Certificate of Veterinary Inspection for both New Jersey and out-of-state poultry entering New Jersey. Please note that VS Form 9-2 and 9-3 are completed by an authorized individual.
- a. [VS Form 9-3](#) – Report of Sales of Hatching Eggs, Chicks, and Poultry.
 - b. [VS Form 9-2](#) – Flock Selecting and Testing Report.
- 4. Animal Health Certificate (AHC):** This document may only be used for animals native to New Jersey attending a New Jersey fair/show in place of a CVI.
- a. An AHC is not valid for interstate shipment of animals.
 - b. An AHC can be issued by an accredited veterinarian prior to or at the fair/show. Issuance of an AHC at the fair/show is at the organizers' discretion as it requires the presence of a veterinarian on the premises. It should be signed by both the veterinarian and the animal owner. Based on their knowledge and judgement, the examining veterinarian must indicate on the form whether the AHC is valid for 30, 60, or 90 days from the examination date.
 - c. Animals listed on an AHC must be identified by an ear tag, tattoo, or other permanent identification or description (coat color, markings, age, etc.)
 - d. The AHC can be found on the NJDA website at: www.nj.gov/agriculture/divisions/ah/pdf/HealthCertificate.pdf
- 5. 4-H Poultry, Rabbit, or Cavy Health Form:** This document can be used for the species indicated in place of a CVI.
- a. Can be completed by the 4-H leader or another qualified adult within 30 days before the exhibition at a 4-H sponsored show or demonstration.

- b. Animals listed on the Poultry, Rabbit, or Cavy Health Form must be identified by an ear tag, tattoo, or other permanent identification or description (coat color, markings, age, etc.)
- c. If using this form for poultry, a [VS Form 9-2](#) is also needed for poultry to attend a fair/show.
- d. The Poultry, Rabbit, or Cavy Health Form can be found on the NJDA website at: www.nj.gov/agriculture/divisions/ah/pdf/4-Hpoultryrabbitcavyform.pdf
- e. If the event is not sponsored by 4-H, the Poultry, Rabbit, or Cavy Health Form cannot be utilized. A CVI, AHC, or VS Form 9-2 must be used, depending on species.
 - i. See [Sections 2 through 4](#) above in this chapter for information on these documents.

6. Rabies vaccination: All animals eligible for an approved USDA rabies vaccination are strongly recommended to be current on rabies vaccination. Individual fairs/shows may require rabies vaccination for mammalian species for which there is a licensed and approved vaccine.

- a. Proof of vaccination by a veterinarian should be provided upon entry to the fair/show.
- b. Domestic mammalian species susceptible to the disease, for which there is no USDA-approved vaccine, are *recommended* to be vaccinated against rabies. However, rabies vaccination may not be necessary for low-risk, small, caged animal species such as rabbits, cavies, chinchillas, and hamsters. Individual fairs/shows may require rabies vaccination for mammalian species for which there is no USDA-approved vaccine.
- c. If vaccination is waived, the exhibitor and show should ensure these animals are separated from the public by sufficient means to not allow direct animal/public contact.

7. Animal health issue during a fair/show: The NJDA recommends that fair/show management arrange for veterinary medical assistance to be on call for the exhibition's duration.

- a. All animal exhibitors should be aware of the local livestock accredited veterinarian(s) willing to provide medical attention for the animals being exhibited.
- b. Any animal showing clinical signs, including, but not limited to, warts, ringworm, footrot, parasites, pink eye, enlarged and inflamed lymph nodes, draining abscesses, or open wounds, must not be exhibited or allowed to remain on the fair or showgrounds.
- c. Fair/show management is responsible for ensuring that animals to be exhibited enter the grounds in good health and with proper documentation.
- d. Everyone associated with the 2026 fairs/shows is encouraged to remain vigilant for potential cases of unusual diseases or any suspicious or abnormal conditions in an animal, herd, or flock. In the event of such observations, contact a veterinarian and the NJDA Division of Animal Health (DAH) at 609-671- 6400 or the USDA Veterinary Services office at 609-259-5260 **immediately**.

- e. Animal death at a fair/show: Fair/show organizers should work with their fair/show veterinarian to create a site-specific plan to keep any deceased animal carcasses away from live animals. Carcasses should be promptly removed from contact with live animals and disposed of in a bio-secure manner, as determined by the fair/show veterinarian. Any livestock or poultry deaths that are unexplained or of a suspicious nature should be reported to NJDA Division of Animal Health (DAH) at 609-671-6400 or the USDA Veterinary Services office at 609-259-5260 **immediately**.
- f. See [Chapter B](#) for emerging diseases and pest information.

8. Commingling different species: Housing different animal species together during a fair/show is not recommended. Close contact between species increases the risk of disease transmission. Some animals may appear healthy but can carry pathogens that do not cause illness in their own species while still posing a risk to other species. It is recommended to keep animals housed separately by species and ideally kept away from other animals outside their own herd or flock.

9. Humane issues: All animals present at the fair/show must be handled and cared for in full compliance with the New Jersey Administrative Code (N.J.A.C.) 2:8 “Humane Treatment of Domestic Livestock.” These rules establish minimum humane standards for the raising, keeping, care, treatment, marketing, and sale of domestic livestock and procedures for enforcing those standards. These standards can be found on the NJDA website at: www.nj.gov/agriculture/divisions/ah/pdf/N.J.A.C.%202-8%20Humane%20Standards%2005-2024.pdf

- a. It is recommended that the fair/show identify and contact both their county and local Humane Law Enforcement Officers (HLEO) before the fair/show.
- b. The NJDA should be contacted if the fair/show is visited by anyone inspecting livestock for any stated reason. All inspectors should be accompanied by a fair/show manager at all times while on the fair/show premises.
- c. Should an animal control officer, HLEO, or any other person(s) investigate animal cruelty at the fair, they must abide by the rules in [N.J.A.C. 2:8](#). NJDA suggests that any investigators be provided with a copy of [N.J.A.C. 2:8](#) and be reminded they may not handle animals, touch feed or water or enter livestock areas without complying with biosecurity protocols under 2:8-8.1 (c), which requires them to wear clean clothing and shoe protection to prevent the spread of infectious or contagious agents on or from the premises.
- d. Questions and concerns regarding [N.J.A.C. 2:8](#), including the failure of inspectors to adhere to biosecurity protocols, must be reported to the State Veterinarian at 609-671-6400.

10. Sale of rabbits, turtles, baby chicks, ducklings:

- a. Rabbits, turtles, baby chicks, ducklings, or other fowl under two months of age may not be sold, offered for sale, bartered, or given away for use as household or domestic pets ([N.J.S.A. 4:22-26q](#));
- b. Baby chicks, ducklings, other fowl, rabbits, turtles, or chameleons that have been dyed or artificially colored or otherwise treated so as to impart to them an artificial color may not be sold, offered for sale, bartered, given away, or displayed ([N.J.S.A. 4:22-26r](#)).

11. Incubators: The NJDA does not oppose the use of incubators at fairs/shows, but proper incubator care is essential. Any fair/show considering an incubator display should be prepared to maintain optimal conditions for the length of the fair/show. Incubators must be closely monitored for temperature and humidity to ensure the welfare of eggs and chicks. Extreme heat or poor conditions may result in harm or mortality. Fairs/shows are encouraged to consult with their fair veterinarian for incubator and chick welfare information.

12. Sale of poultry:

- a. Any person selling poultry (including baby chicks) at a fair/show shall provide to the buyer a copy of the [VS Form 9-2 or VS Form 9-3](#), which certifies the poultry originated from a pullorum-typhoid clean/NPIP approved hatchery or flock.
- b. All poultry too young to qualify for testing at the time of movement to a fair/show must meet movement requirements based on negative pullorum-typhoid testing of the parent flock. This can be achieved through testing at the hatchery, documented with a VS Form 9-3, or through on-farm testing of the parent flock, documented with a VS Form 9-2.

13. Permit requirement to sell baby chicks:

- a. Before offering baby chicks for sale at any fair/show (unless it is a public sale by farmers selling chicks raised on their own NJ premises) a permit must be obtained from the NJDA-DAH no later than one month in advance of the event ([N.J.S.A. 4:3- 12-19](#)). This includes chicks directly shipped from a hatchery to be sold at the fair/show.
 - i. Permit applications are available by calling (609) 671-6400.
 - ii. There will be a \$5.00 per day fee charged for each day chicks will be offered for sale.
 - iii. The seller will need to specify the number and breed of chicks to be offered for sale and provide documentation (either a VS 9-3 from the hatchery or a VS 9-2 of the parent stock) verifying that the chicks offered for sale are from a pullorum-

typhoid clean/NPIP-approved hatchery/flock or the parent flock was tested for pullorum-typhoid. This documentation is required before a permit is issued.

iv. A spreadsheet must be completed and returned to NJDA-DAH within three days following the end of the fair/show. The following information must be recorded on the spreadsheet:

1. The number and breed of chicks sold
2. The date they were hatched
3. By whom they were hatched
4. The name and complete address of each buyer.

14. Food safety: Any food animal exhibited should be accompanied by a [Drug Use Form](#).

- a. This form certifies that:
 - i. The animal has not been treated with drugs or medications,
 - ii. OR the animal does not contain a drug for which the withdrawal period has not yet lapsed per label directions,
 - iii. OR the animal has received drugs or medication, and the withdrawal period has not yet elapsed as per the label directions.
- b. This form should be made available to in-state and out-of-state exhibitors since it helps protect the consumer and teaches exhibitors responsibility in the management and care of food animals.
- c. This document should follow the food animal to its final slaughter destination.
- d. The animal identification, drug name, date(s) of administration, the route of administration, and the drug withdrawal time prior to slaughter must be documented.
- e. **Animals cannot be turned away from the fair/show because they received medications. The drugs simply need to be documented, and the withdrawal time clearly stated.**
- f. It is the animal producer's responsibility to check with their veterinarian as to what medications can be given. It is recommended that exhibitors read about the proper use of antibiotics and other medications.
 - i. Certain drugs, such as gentamicin, are illegal for use in food animals.
- g. The Drug Use Form can be found at www.nj.gov/agriculture/divisions/ah/pdf/DrugUseForm.pdf

15. Public Health Concerns: Interaction between people and animals provide valuable and enjoyable experiences that should be encouraged. However, during such contact, there is some risk of disease transmission.

- a. To protect both humans and animals, the New Jersey Department of Agriculture, in consultation with the New Jersey Department of Health, encourages all fairs/shows to

implement the following precautionary steps to protect both visitors and animals from disease:

- i. Provide hand-cleaning stations/facilities and post signs reminding visitors to wash their hands before and after contact with animals.
 1. Provide running water, soap, and paper towels to dry hands.
 2. Hand-washing stations should be accessible to all guests, including children and people with disabilities.
 3. Provide alcohol-based hand rubs for use on clean hands.
 4. Post signs indicating the location of hand-cleaning stations or facilities.
 5. Adults should supervise children during hand washing.
 6. Maintain safe and clean stations/facilities to protect visitors and animals.
 7. Trash cans should be available and emptied regularly.
 - ii. Do not allow human food or drink in animal contact areas.
 - iii. Instruct visitors to not eat, drink, smoke, place their hands in their mouth, or use bottles or pacifiers while in animal contact areas.
 - iv. Forbid smoking in animal contact areas and at hand-cleaning stations/facilities.
 - v. Ensure that no feed is fed to the animals unless specifically provided by the fair.
 - vi. Supervise children closely when in animal contact areas to prevent hand-to-mouth activities or contact with soiled bedding.
 - vii. Keep strollers, pacifiers, toys, and baby bottles out of animal contact areas.
 - viii. Post signs that animals can carry germs that can make people sick and that children younger than 5 years, people 65 years and older, people who are pregnant, and people with weakened immune systems are at higher risk from diseases that can spread from animals to people.
- b. A poster series intended for posting at hand-cleaning stations/facilities and animal tents can be found at www.nj.gov/agriculture/divisions/ah/prog/index.shtml under the “Fairs and Shows” tab.
 - c. The “[Stay Healthy Around Animals](#)” poster has instructions on proper handwashing technique and can be found at www.nj.gov/health/vph/documents/Stay_Healthy_Around_Animals_Graphic.pdf

16. Wild animal management on fair or show grounds: Fair planners experiencing specific wildlife issues on the site, may contact United States Department of Agriculture Wildlife Services (USDA WS) at 908-735-5654. For instance, if wild geese are nesting at a pond on the facility or vultures are roosting near the barns, USDA WS can provide specific recommendations.

- a. Below links are related to wild birds and Avian Influenza

- i. Manage Wildlife To Prevent Avian Influenza Guidance Document: <https://www.aphis.usda.gov/sites/default/files/fs-manage-wildlife-prevent-ai.508.pdf>
- ii. Do Not Touch Dead Birds Flyer: <https://dep.nj.gov/wp-content/uploads/njfw/avian-influenza-sign-2-black-and-white.pdf>
- iii. NJ Department of Environmental Protection (NJ DEP) Highly Pathogenic Avian Influenza Website:
 - 1. Wild Bird Reporting Form: <https://survey123.arcgis.com/share/749040214c974bb88c89c58483a51ab8>
 - 2. <https://dep.nj.gov/njfw/highly-pathogenic-avian-influenza/>
- b. NJ DEP Fish & Wildlife does not advise that the public handle sick or dead wildlife.
- c. If sick or dead wild birds are discovered on at the fair/show, the local municipality or county should be contacted to inquire about animal control services or private wildlife control services able to dispose of dead wildlife.

17. Recent Travel to Foreign Countries: Fair/show attendees should be questioned before entry onto the fair/showgrounds about recent travel to foreign countries to determine potential exposure to disease-infected livestock and poultry.

- a. Anyone who has been within one mile of foreign livestock or poultry areas, zoos, or game parks in the past five days should be considered potentially exposed. This individual should have their shoes cleaned and disinfected at the fair/show entry point and be discouraged from visiting the livestock and poultry. Vinegar should be offered to disinfect watches, eyeglasses, etc.
- b. If a single-entry point/control point cannot be established on the fair/showgrounds to question attendees, it is recommended that attendees not be allowed to get close to or touch the animals.

Chapter B: Emerging diseases and pest information

The diseases and pests discussed in this section were selected due to their relevance for impacting animal agriculture in New Jersey. Everyone associated with the 2026 fairs/shows is encouraged to remain vigilant for potential cases of unusual diseases or any suspicious or abnormal conditions in an animal, herd, or flock. In the event of such observations, contact a veterinarian and the NJDA Division of Animal Health (DAH) at 609-671- 6400 or the USDA Veterinary Services office at 609-259-5260 **immediately**.

African Swine Fever (ASF) – ASF is a highly contagious and deadly viral disease of domestic and wild pigs. This virus is not harmful to people and is not a food safety issue but would have severe consequences to the swine industry if introduced into the United States.

- ASF is currently devastating pig populations in Africa, Asia, Europe, the Dominican Republic, and Haiti.
- ASF is spread by contact with an infected animal's body fluids. It can also be spread by certain ticks, by people moving the virus on vehicles or clothing, and by feeding pigs infected pork products.
- There is no treatment or vaccine, so prevention depends on strong everyday biosecurity.
- Producers and exhibitors can help protect their animals by:
 - Use dedicated boots and clothing when working with pigs.
 - Clean and disinfect trailers and equipment before and after shows.
 - Prevent contact with feral swine.
 - Never feed food products containing pork to swine.
 - Promptly report any unusual illness or sudden death to a veterinarian.

Asian Longhorned Tick (ALT) - The ALT was detected in New Jersey in 2017 and is now found in multiple U.S. states. This tick can reproduce rapidly, allowing for large numbers to build up on livestock.

- Heavy infestations can cause stress, blood loss, and decreased productivity.
- This tick has also been associated with the spread of *Theileria orientalis* Ikeda, a parasite that infects red blood cells and can cause weakness, decreased milk production, reproductive issues, and death.
 - The first confirmed case of [Theileria orientalis Ikeda in New Jersey cattle](#) was detected in November 2024 in Hunterdon County.
- Producers can help protect their herds and exhibition animals by:
 - Routinely checking livestock for ticks.
 - Asking their veterinarian about tick control products.
 - Maintaining their pastures and minimizing tick habitat, like brush.
 - Monitoring their animals and contacting their veterinarian with concerns.
 - Management practices for cattle producers for controlling ALT can be found at: <https://www.pubs.ext.vt.edu/ENTO/ENTO-382/ENTO-382.html>

Highly Pathogenic Avian Influenza (HPAI) - Also known as “bird flu” has been detected in the US in domestic poultry, backyard flocks, and wild birds since 2022. HPAI is a highly contagious virus that is transmitted from bird-to-bird easily. All poultry owners should be on the lookout for signs of illness in their poultry and use good biosecurity practices to protect their birds.

- Signs of HPAI may include:
 - Sudden increase in bird deaths
 - Sneezing, nasal discharge (runny nose)
 - Gasping for air and/or coughing
 - Swelling around eyes, neck, head
 - Purple/blue discoloration of the wattles, combs, or legs
 - Watery and/or green diarrhea
 - Lack of energy
 - Poor appetite
 - Drop in egg production
 - Soft, thin-shelled, or misshapen eggs
- Information on good biosecurity practices for backyard flocks can be found here:
 - [USDA's Defend the Flock: www.aphis.usda.gov/livestock-poultry-disease/avian/defend-the-flock](http://www.aphis.usda.gov/livestock-poultry-disease/avian/defend-the-flock)
- To protect the New Jersey poultry industry, the NJDA recommends that all fair/show management:
 - Adopt rules requiring all exhibited poultry and hatching eggs to be accompanied by a certification that they are free from avian influenza, regardless of where the birds originated.
 - Allow only healthy birds to attend the fair/show.
 - Designate separate areas to show waterfowl and gallinaceous poultry.
 - Do not allow sharing of any equipment.
 - Do not allow touching/petting of birds.
 - Clean and disinfect frequently.
 - Use a deterrent to keep wild birds away.
 - Remove sick birds and report to fair/show veterinarian and the NJDA Division of Animal Health at (609) 671-6400 immediately.
 - If highly pathogenic avian influenza (HPAI) is detected in NJ, the NJDA may ask for the cancellation of fairs and shows to prevent the spread of HPAI.

Avian Influenza Virus (HPAI) in Livestock - HPAI was detected in dairy cattle in the United States in early 2024. As of this writing, HPAI has been detected in dairy cattle in 19 states. There have been no detections in NJ and neighboring states, but cattle owners should remain especially vigilant.

- Signs of HPAI in dairy cattle include:
 - Decreased appetite
 - Drop in milk production
 - Thickened milk
 - Abnormal feces
 - Fever
- To protect New Jersey’s dairy industry, NJDA recommends all fair/show management work with their fair/show veterinarian to tailor their written site-specific biosecurity and animal handling policies. Some key aspects of such a plan include:
 - Exhibitors should clean and disinfect all their equipment on site.
 - Exhibitors should only use their own milking equipment, tools, feeding and cleaning supplies, etc.
 - It is recommended that owners transport only their own cattle.
 - Exhibitors should provide their own feed and bedding.
 - Limit co-mingling of cows from different herds.
- Fair/show management should ensure that accurate exhibitor contact information is on file to facilitate prompt communication, should it be necessary.
- All cattle entering the event should have their farm origin and identification collected.
- Any animal at a fair/show that becomes ill with signs consistent with HPAI should be reported to a veterinarian and the NJDA Division of Animal Health at (609) 671-6400 immediately.
- For additional information: [USDA HPAI in Dairy Cattle: www.aphis.usda.gov/livestock-poultry-disease/avian/avian-influenza/hpai-livestock/hpai-dairy-cattle-story-map](http://www.aphis.usda.gov/livestock-poultry-disease/avian/avian-influenza/hpai-livestock/hpai-dairy-cattle-story-map)

New World Screwworm (NWS): NWS is a parasitic fly that lays eggs in open wounds of livestock and other warm-blooded animals. The maggots feed on living tissue, causing rapidly worsening, painful wounds that can be fatal if untreated. NWS is not currently in the United States, but it remains a serious threat and requires immediate reporting if suspected. Producers and exhibitors can help protect their animals by:

- Treating and covering any cuts, surgical sites, or naval areas.
- Inspecting animals daily – especially around wounds, navels, and natural openings.
- Maintain good sanitation in pens and trailers.
- Any unusual, foul-smelling wounds with visible maggots or tissue damage should be reported to a veterinarian and the NJDA Division of Animal Health at (609) 671-6400 immediately.
- For more information visit: [USDA, www.screwworm.gov](http://www.screwworm.gov)

Rabbit Hemorrhagic Disease (RHDV2) – In March 2020, a case of RHDV2 was found in New Mexico and has been detected in many states since, including New Jersey. RHDV2 is a highly contagious and often fatal viral disease affecting domestic and wild rabbits. This virus does not affect people or other livestock species, but it can cause sudden death in rabbits with few or no warning signs. The virus spreads through direct contact with infected rabbits, contaminated cages, equipment, clothing, feed and water, and it can survive in the environment for long periods. Producers and exhibitors can reduce the risk by:

- Limiting contact between show rabbits and wild rabbits.
- Clean and disinfect cages and transport carriers often.
- Use dedicated footwear and clothing when handling rabbits.
- Quarantining new or returning rabbits before mixing them with others.
- Talk to their veterinarian to determine if vaccination is appropriate for their rabbit.

Swine Enteric Coronavirus Disease (SECD) – SECD includes infections with the Porcine epidemic diarrhea virus (PEDV) and porcine deltacoronavirus (PDCoV), which are highly contagious viral diseases that cause severe diarrhea and dehydration in pigs. These viruses do not affect people, but they can be easily spread through manure, contaminated trailers, equipment, clothing, and boots, making fairs and shows higher-risk environments. Producers and exhibitors can reduce risk by:

- Thoroughly cleaning and disinfecting trailers before and after events.
- Use dedicated boots and clothes when handling pigs.
- Avoid sharing equipment between farms.
- Closely monitoring animals for signs of diarrhea, vomiting, or sudden illness.
- Fairs/shows should have biosecurity measures planned and in place for SECD.
- Exhibitors should avoid bringing their show animal home to their original herd. If an animal that attends a fair/show needs to return home, it should be separated from the rest of the herd and monitored for signs of illness. Exhibitors should consult their veterinarian on herd management in these cases.

Virulent Newcastle Disease (VND) – formerly known as exotic Newcastle disease- is a highly contagious and often deadly viral disease of poultry that can spread rapidly through flocks at farms and exhibitions. This virus does not pose a food safety risk to people, but it can cause severe illness in birds, including sudden death, trouble breathing, green diarrhea, swelling around the eyes, and neurological signs such as tremors or twisted necks. The virus spreads through direct contact

between birds and through contaminated equipment, cages, clothes, shoes, and vehicles. Producers and exhibitors can reduce the risk by:

- Limiting contact between flocks – do not mingle birds from other farms.
- Use dedicated footwear and clothes in poultry areas.
- Clean and disinfect cages and equipment before and after events.
- Prevent contact with wild birds.
- Isolate birds when they return home from a fair/show.
- Any unusual or sudden increase in deaths should be reported to a veterinarian and the NJDA Division of Animal Health at (609) 671-6400 immediately.


Vesicular Stomatitis virus (VSV) – VSV is a viral disease that affects horses, cattle, swine, and other livestock, causing painful blister-like lesions on the mouth, tongue, lips, teats, and hooves. Animals may drool, refuse feed, or appear lame. While the illness is usually not fatal, it can significantly impact animal welfare and movement. The virus is primarily spread through biting flies and can move between animals through direct contact or contaminated equipment. Because its signs resemble foreign animal diseases, like foot-and-mouth disease, it must be taken seriously and reported immediately to a veterinarian and the NJDA Division of Animal Health at (609) 671-6400. Producers and exhibitors can reduce the risk by:

- Implementing insect control measures near barns and animals.
- Cleaning and disinfecting shared surfaces.
- Minimizing animal comingling when possible.
- Keep different species of animals separate and not housed together.
- Monitor livestock closely for sores or excessive drooling.


Chapter C: Species-Specific Health Regulations and Recommendations

Symbol Key: ✓ (Circle with a checkmark) is a **Requirement**.
○ (Empty circle) is a **Recommendation**.

New Jersey Cattle attending a New Jersey Fair/Show:

- **Requirements:** None.
- **Recommendations:**
 - Recommended be accompanied by an official CVI or AHC.
 - Recommended that NJ-origin cattle be identified by USDA-approved official identification. Identification can be:
 - A USDA issued National Uniform Eartagging System (NUES) tag if applied prior to Nov. 5, 2024. This tag type is no longer valid for interstate movement if applied after Nov. 5, 2024.
 - A 15-digit Animal Identification Number (AIN) ear tag starting with “840” and bearing the US shield .
 - It is recommended that fair/show management work with their fair/show veterinarian to have site-specific biosecurity plans for exhibiting dairy cattle given the risk of avian influenza (HPAI) transmission to dairy cattle.
 - See [Chapter B](#) for information on HPAI in dairy cattle and additional biosecurity recommendations.

Imported Cattle attending a New Jersey Fair/Show:

- **Requirements:**
 - ✓ Must be accompanied by an official CVI.
 - ✓ Must have USDA-approved official identification. Identification can be:
 - A USDA issued National Uniform Eartagging System (NUES) tag if applied prior to Nov. 5, 2024. This tag type is no longer valid for interstate movement if applied after Nov. 5, 2024.
 - A 15-digit Animal Identification Number (AIN) ear tag starting with “840” and bearing the US shield .
 - ✓ Must be negative to a tuberculosis test within 60 days prior to entry – *Cattle from an accredited-free [State, zone, or herd](#) are exempt from testing*. The date and test results must be included on the CVI.

- For an accredited herd, the CVI shall include the date on which the herd of origin was last tuberculin tested and a statement by the accredited veterinarian that the cattle to be imported were:
 - Included in the most recent test of the herd of origin and testing with negative results occurred within one year prior to the date of movement, or they are natural additions to the herd.
 - ☑ Cattle six months of age or older must be negative to an official brucellosis test within 30 days of entry – *Cattle to be imported that originates from a [Class Free State or Area](#) are exempt from brucellosis testing.* The date and test results must be included on the CVI.
 - Brucellosis vaccinated heifers under 14 months of age, steers, and spayed heifers are exempt from brucellosis testing.
 - ☑ Must be negative to an anaplasmosis and/or bluetongue test within 30 days prior to entry if the cattle originate from a state that the USDA determines to be endemic for anaplasmosis and/or Bluetongue. The date and test results must be included on the CVI.
 - ☑ Lactating Dairy Cattle must be negative to an official HPAI test within 7 days prior to movement. The date and test results must be included on the CVI.
- **Recommendations:** None.

New Jersey Goats attending a New Jersey Fair/Show:

- **Requirements:**
 - ☑ All NJ-origin goats of any age who undergo a change of ownership and are not in slaughter channels must be identified by USDA-approved official identification. Identification can be:
 - USDA-approved ear tag or tattoo
 - Tattoo is recommended for breeds with small ears. Can be tattooed at base of tail.
 - USDA- approved ISO 11784/95 compliant implantable microchip if the goat is registered with a national breed association that allows the use of implantable microchips.
 - Registration papers documenting the microchip number must travel with the animal.
 - Microchip reader must be brought to the fair/show.
 - Microchip can be placed in the tail for “earless” animals.
- **Recommendations:**
 - Recommended to be accompanied by an official CVI or AHC.

- All NJ-origin goats of any age are recommended to be identified by USDA-approved official identification. Identification can be:
 - USDA-approved ear tag or tattoo
 - Tattoo is recommended for breeds with small ears. Can be tattooed at base of tail.
 - USDA- approved ISO 11784/95 compliant implantable microchip if the goat is registered with a national breed association that allows the use of implantable microchips.
 - Registration papers documenting the microchip number must travel with the animal.
 - Microchip reader must be brought to the fair/show.
 - Microchip can be placed in the tail for “earless” animals.

Imported Goats attending a New Jersey Fair/Show:

- **Requirements:**

- ☑ Must be accompanied by an official CVI.
- ☑ All goats of any age must be identified by USDA-approved official identification. Identification can be:
 - USDA-approved ear tag or tattoo
 - Tattoo is recommended for breeds with small ears. Can be tattooed at base of tail.
 - USDA- approved ISO 11784/95 compliant implantable microchip if the goat is registered with a national breed association that allows the use of implantable microchips.
 - Registration papers documenting the microchip number must travel with the animal.
 - Microchip reader must be brought to the fair/show.
 - Microchip can be placed in the tail for “earless” animals.
- ☑ All goats to be imported must be negative to an official tuberculosis test within 60 days prior to entry. *Goats from an accredited-free [State or Zone](#) or from an accredited herd shall be exempt from testing.* The date and test results must be included on the CVI.
 - For an accredited herd, the CVI shall include the date on which the herd of origin was last tuberculin tested and a statement by the accredited veterinarian that the goats to be imported were:

- Included in the most recent test of the herd of origin and testing with negative results occurred within one year prior to the date of movement, or they are natural additions to the herd.
- ☑ All goats to be imported four months of age or over must be negative to an official brucellosis test within 30 days prior to entry. *Wethers are exempt from brucellosis testing.* The date and test results must be included on the CVI.
 - Please note: In lieu of brucellosis testing, the State Veterinarian may allow goats that do not originate from brucellosis-free herds to attend NJ fairs/shows if the owner contacts the NJ Division of Animal Health at (609) 671-6400 between 9:00am – 4:30pm EST M-F to obtain a permit number to be included on the CVI. Owners will need to provide the following information:
 - Name of owner
 - National Premises Identification number or scrapie flock identification number
 - Addresses of premises of origin and destination
 - Number of goats to entering into New Jersey
 - Precise dates of movement.
- **Recommendations:** None.

New Jersey Horses attending a New Jersey Fair/Show:

- **Requirements:**
 - ☑ Must be accompanied by a valid EIA (Coggins) form certifying the animal has had a negative official test (AGID or ELISA) for equine infectious anemia (EIA) within the past 24 months.
 - *Horses younger than 6 months old, that is accompanied by its dam that has a negative official Coggins test within the past 24 months is exempt from testing.*
 - ☑ Horses that are to change owners via sale, barter, or trade must have a negative Coggins test within 90 days prior to the change of ownership.
- **Recommendations:**
 - Recommended to be accompanied by an official CVI or AHC.

Imported Horses attending a New Jersey Fair/Show:

- **Requirements:**
 - ☑ Must be accompanied by an official CVI.

- ☑ Must be accompanied by a valid EIA (Coggins) form certifying the animal has had a negative official test (AGID or ELISA) for equine infectious anemia (EIA) within the past 12 months. The date and test results must be included on the CVI.
 - *Horses younger than 6 months old, that is accompanied by its dam that has a negative official Coggins test within the past 12 months is exempt from testing.*
- ☑ Horses that are to change owners via sale, barter, or trade must have a negative Coggins test within 90 days prior to the change of ownership.
- **Recommendations:** None.

New Jersey Camelids (Llama/Alpaca) attending a New Jersey Fair/Show:

- **Requirements:** None.
- **Recommendations:**
 - Recommended to be accompanied by an official CVI or AHC.
 - There is no official ID requirement for camelids (llamas/alpacas). They may be identified by name, number, species, breed, and physical description.

Imported Camelids (Llama/Alpaca) attending a New Jersey Fair/Show:

- **Requirements:**
 - ☑ Must be accompanied by an official CVI.
 - ☑ Must be negative to a bluetongue test within 30 days prior to entry if the camelids originate from a state that the USDA determines to be endemic for Bluetongue. The date and test results must be included on the CVI.
 - ☑ All camelids to be imported six months of age or over must be negative to an official brucellosis test within 30 days prior to entry. *Neutered males are exempt from brucellosis testing.* The date and test results must be included on the CVI.
 - ☑ Must be negative to a tuberculosis test within 60 days prior to entry – *Camelids from an accredited-free State or zone are exempt from testing.* The date and test results must be included on the CVI.
- **Recommendations:** None.

New Jersey Poultry and Hatching Eggs attending a New Jersey Fair/Show:

- **Requirements:**

- ☑ All poultry (except waterfowl, pigeons, and doves) and hatching eggs must originate from U.S. Pullorum-Typhoid Clean (or equivalent) flocks or must have an individual negative Pullorum-Typhoid test performed within 90 days prior to the fair/show.
 - Individual Pullorum-Typhoid testing requirements are created by the federal government and can be found in the [Code of Federal Regulations \(CFR\) at 9CFR part 145](#). These requirements include:
 - Poultry (except for those types listed below) must be tested when 4 months of age or older.
 - *Poultry under 4 months of age must originate from Pullorum-Typhoid negative flocks or*
 - *Parents of poultry under 4 months of age may be tested to move the young poultry to a fair/show. Both parents must be present and identified on farm in these cases.*
 - Turkeys must be blood tested when 12 weeks of age or older. Turkeys shall only be tested by NJDA authorized personnel. *Turkeys under 12 weeks of age must originate from Pullorum-Typhoid negative flocks.*
 - Game birds (including quail, chukar, grouse, pheasant) must be tested when 4 months of age or older or upon reaching sexual maturity, whichever comes first. *Game birds under 4 months of age and have not reached sexual maturity must originate from Pullorum-Typhoid negative flocks.*
 - Ostriches, emus, rheas, and cassowaries must be blood tested when 12 months of age or older. *All ostriches, emus, rheas, and cassowaries less than 12 months of age must originate from Pullorum-Typhoid negative flocks.*
 - Waterfowl, pigeons, and doves are exempt from Pullorum-Typhoid testing.
 - Contact information for certified pullorum testers is available by calling the Division of Animal Health at (609) 671-6400.
- **Recommendations:**
 - Recommended that all poultry and hatching eggs, including chickens, turkeys, guinea fowl, peafowl, quail, grouse, chukars, pheasant, ratites (ostrich, emu, rhea, and cassowaries), waterfowl, pigeons, and doves be accompanied by an official [CVI, AHC, VS Form 9-2 or 9-3, or a 4-H Poultry, Rabbit, or Cavy Health Form](#).
 - It is recommended that all fair/show management adopt rules requiring all exhibited poultry and hatching eggs to be accompanied by a certification that they are free from avian influenza, regardless of where the birds originated.
 - See [Chapter B](#) for additional information about avian influenza and recommendations.

Imported Poultry and Hatching Eggs attending a New Jersey Fair/Show:

- **Requirements:**

- ☑ All poultry and hatching eggs, including chickens, turkeys, guinea fowl, peafowl, quail, grouse, chukars, pheasant, ratites (ostrich, emu, rhea, and cassowaries), waterfowl, pigeons, and doves must be accompanied by an official CVI or [VS Form 9-2 or 9-3](#).
- ☑ All poultry (except waterfowl, pigeons, and doves) and hatching eggs must originate from U.S. Pullorum-Typhoid Clean (or equivalent) flocks or must have an individual negative Pullorum-Typhoid test performed within 90 days prior to the fair/show.
 - Individual Pullorum-Typhoid testing requirements are created by the federal government and can be found in the [Code of Federal Regulations \(CFR\) at 9CFR part 145](#). These requirements include:
 - Poultry (except for those types listed below) must be tested when 4 months of age or older.
 - *Poultry under 4 months of age must originate from Pullorum-Typhoid negative flocks or*
 - *Parents of poultry under 4 months of age may be tested to move the young poultry to a fair/show. Both parents must be present and identified on farm in these cases*
 - Turkeys must be blood tested when 12 weeks of age or older. Turkeys shall be tested using a microtiter or tube agglutination test. *Turkeys under 12 weeks of age must originate from Pullorum-Typhoid negative flocks.*
 - Game birds (including quail, chukar, grouse, pheasant) must be tested when 4 months of age or older or upon reaching sexual maturity, whichever comes first. *Game birds under 4 months of age and have not reached sexual maturity must originate from Pullorum-Typhoid negative flocks.*
 - Ostriches, emus, rheas, and cassowaries must be blood tested when 12 months of age or older. *All ostriches, emus, rheas, and cassowaries less than 12 months of age must originate from Pullorum-Typhoid negative flocks.*
 - Waterfowl, pigeons, and doves are exempt from Pullorum-Typhoid testing.
- ☑ All poultry and hatching eggs, including chickens, turkeys, guinea fowl, peafowl, quail, grouse, chukars, pheasant, ratites (ostriches, emus, rheas, and cassowaries), waterfowl, pigeons, and doves must originate and move directly from an established flock that participates in the [NPIP U.S. Avian Influenza Clean program or NPIP U.S. H5/H7 Avian Influenza Clean or Monitored programs](#); or

- Originate and move directly from a test negative Avian Influenza monitored flock (as defined in [N.J.A.C. 2:9-2.1](#)); or
 - Originate and move directly from a test negative Avian Influenza tested flock (as defined in [N.J.A.C. 2:9-2.1](#)).
 - Poultry under 7 days of age are exempt from testing requirements if these birds originate and move directly from a breeding flock that meets the above-mentioned requirements.
 - Pigeons and doves are exempt from Avian Influenza testing.
- **Recommendations:** None.

New Jersey Sheep attending a New Jersey Fair/Show:

- **Requirements:**
 - ☑ All NJ-origin goats of any age who undergo a change of ownership and are not in slaughter channels must be identified by USDA-approved official identification. Identification can be:
 - USDA-approved ear tag or tattoo
 - USDA- approved ISO 11784/95 compliant implantable microchip if the sheep is registered with a national breed association that allows the use of implantable microchips.
 - Registration papers documenting the microchip number must travel with the animal.
 - Microchip reader must be brought to the fair/show.
- **Recommendations:**
 - Recommended to be accompanied by an official CVI or AHC.
 - All NJ-origin sheep of any age are recommended to be identified by USDA-approved official identification. Identification can be:
 - USDA-approved ear tag or tattoo
 - USDA- approved ISO 11784/95 compliant implantable microchip if the sheep is registered with a national breed association that allows the use of implantable microchips.
 - Registration papers documenting the microchip number must travel with the animal.
 - Microchip reader must be brought to the fair/show.

Imported Sheep attending a New Jersey Fair/Show:

- **Requirements:**
 - ☑ Must be accompanied by an official CVI.

- ☑ Sexually intact sheep of any age must be identified by USDA-approved official identification. Identification can be:
 - USDA-approved ear tag or tattoo
 - USDA- approved ISO 11784/95 compliant implantable microchip if the sheep is registered with a national breed association that allows the use of implantable microchips.
 - Registration papers documenting the microchip number must travel with the animal.
 - Microchip reader must be brought to the fair/show.
- ☑ Must be negative to an official bluetongue test within 30 days prior to entry if the sheep originate from a state that the USDA determines to be endemic for Bluetongue. The date and test results must be included on the CVI.
- **Recommendations:** None.

New Jersey Swine attending a New Jersey Fair/Show:

- **Requirements:**
 - ☑ Must be accompanied by an official CVI or AHC.
 - ☑ NJ-origin swine must be identified by USDA-approved official identification if an official CVI is used. Official identification must be an official 840 series tag. This number must appear on the CVI.
- **Recommendations:**
 - Recommended that pigs attending fairs/shows should not return home or be re-introduced to other pigs. If pigs are to return to the herd, preventative measures should be put in place to reduce the chance of introducing swine enteric coronavirus disease (SECD) into the herd.
 - Isolate and test the returning swine for SECD before returning to the herd.
 - SECD is not a zoonotic disease and does not pose a public health risk to humans. However, the public can spread this virus to other pigs at fairs/shows. Public separation from pigs is recommended but not required. Enhanced biosecurity measures to prevent the potential spread of SECD is recommended.
 - For more information on SECF, visit the [NJDA's website](http://www.nj.gov/agriculture/divisions/ah/prog/swineentericdiseases.shtml) at www.nj.gov/agriculture/divisions/ah/prog/swineentericdiseases.shtml

Imported Swine attending a New Jersey Fair/Show:

- **Requirements:**

- ✓ Must be accompanied by an official CVI.
 - The CVI must contain a statement from the issuing veterinarian that they personally inspected the pigs and found them free of clinical signs of infectious, contagious, or communicable diseases or known exposure within 30 days of the shipment.
 - ✓ Pigs of any age must be identified by USDA-approved official identification. Official identification must be an official 840 series tag. This number must appear on the CVI.
 - ✓ Must be negative to an official brucellosis test within 30 days prior to entry- *swine from a Brucellosis Free [State, Area](#), or herd are exempt from brucellosis testing*. The date and test results must be included on the CVI.
 - ✓ Must be negative to an official pseudorabies test within 30 days prior to entry – *swine from a pseudorabies IV or V [State/Area](#) or originate from a qualified pseudorabies negative herd are exempt from testing*. The date and test results must be included on the CVI.
- **Recommendations:** None.

The New Jersey Department of Agriculture appreciates your commitment to protecting animal health and supporting New Jersey’s agricultural community. Thank you for helping keep our state’s livestock healthy, and we wish you a safe and enjoyable 2026 fair and show season!

